



TfNSW Bicycle Network

Data Dictionary

Date: 1/08/2021

Version: 1



Bicycle Network

The publicly-available fields for the NSW Bicycle Network.

Name	Type	Domain	Description
Shape	polyline	None	The geometry of the link.
roadclass	Text	None (not in road reserve) Classified Road Other Road	The corridor type that the link is aligned to. If the link runs along a road, but leaves the road reserve, it should be marked with 0.
region	Text	<ul style="list-style-type: none"> - Harbour City - Northern NSW - Parklands City - River City - Southern NSW - Western NSW 	The region (defined by Transport) that the link exists within:
lga	Text	None	Local Government Area that the link exists within.
name	Text	None	Street name, path name, park name, river name or other identifying name that the link runs in alignment with.
facility	Text	For information on the valid domain values, click here . Note that not all facility types are included in all datasets. For example, datasets of the existing network do not include F = Footpath, N = No facility etc.	Describes the facility type, which mainly describes the type of users who can use the facility. For example "Mixed Traffic" states that cars and bicycles can use the facility. "Shared Use" states that pedestrians and bicycles can use the space.
infra	Text	For information on the valid domain values, click here .	Describes the existing infrastructure. For example, this field may be set to values such as Path, Road, Wombat crossing, Etc. This field does not determine whether the Path is a Footpath or a Shared Path. That is determined by the facility field.
oneway	Text	<ul style="list-style-type: none"> - Yes - No 	The one-way status of the link.
width	Double	None	Width in metres.
length_km	Double	None	Length in kilometres.



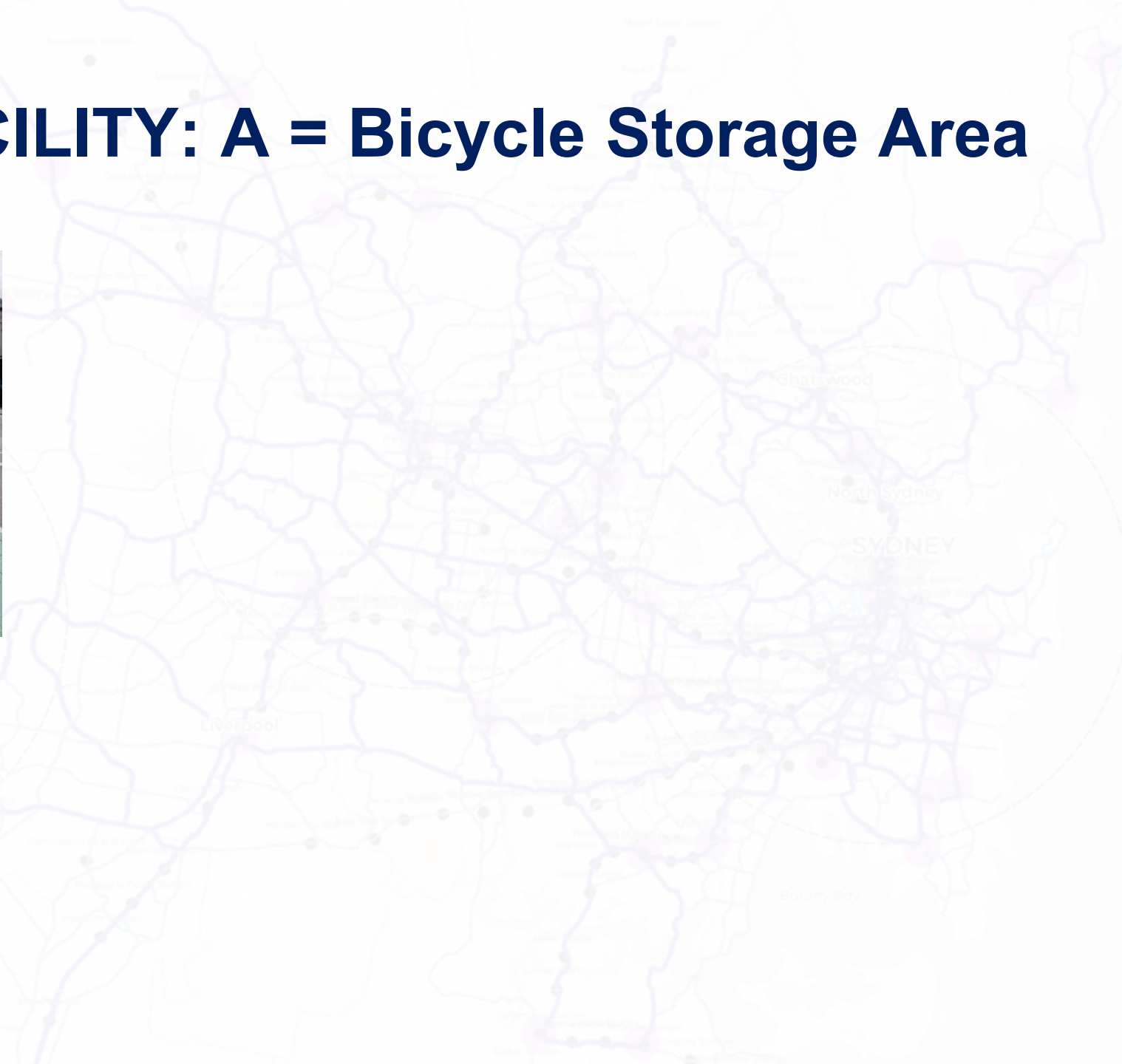
FACILITY Codes

<u>A</u>	<u>Bicycle Storage Area</u>	<u>N</u>	<u>No traffic</u>
<u>B</u>	<u>Bicycle Only</u>	<u>O</u>	<u>Bus Only or Tram Only Lane</u>
<u>C</u>	<u>Contra-flow Cycling</u>	<u>P</u>	<u>Parking Lane</u>
<u>D</u>	<u>Dirt Users</u>	<u>Q</u>	<u>Quietway</u>
<u>E</u>	<u>Emergency Stopping Lane</u>	<u>S</u>	<u>Shared Use</u>
<u>F</u>	<u>Foot Only</u>	<u>T</u>	<u>Tram Lane (bicycles permitted)</u>
<u>G</u>	<u>Separated Pathway</u>	<u>U</u>	<u>Bus Lane (bicycles permitted)</u>
<u>H</u>	<u>High-speed Shoulder</u>	<u>V</u>	<u>Motor Vehicle Only</u>
<u>L</u>	<u>Bicycle Lane</u>	<u>Z</u>	<u>Shared Zone</u>
<u>M</u>	<u>Mixed Traffic</u>		



FACILITY: A = Bicycle Storage Area

INFRA = R (road)





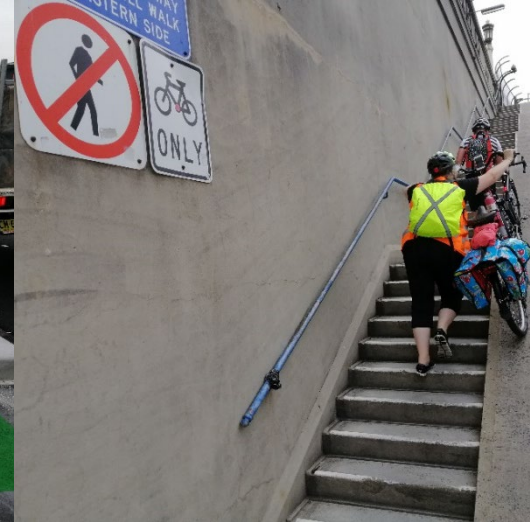
FACILITY: B = Bicycle Only

INFRA = B (bridge/boardwalk)

INFRA = C (culvert/tunnel)

INFRA = P (path)

INFRA = S (steps)



INFRA = T (traffic control sig. crossing)

INFRA = U (unsignalised crossing)

INFRA = W (wombat crossing)

INFRA = Z (road-grade priority crossing)



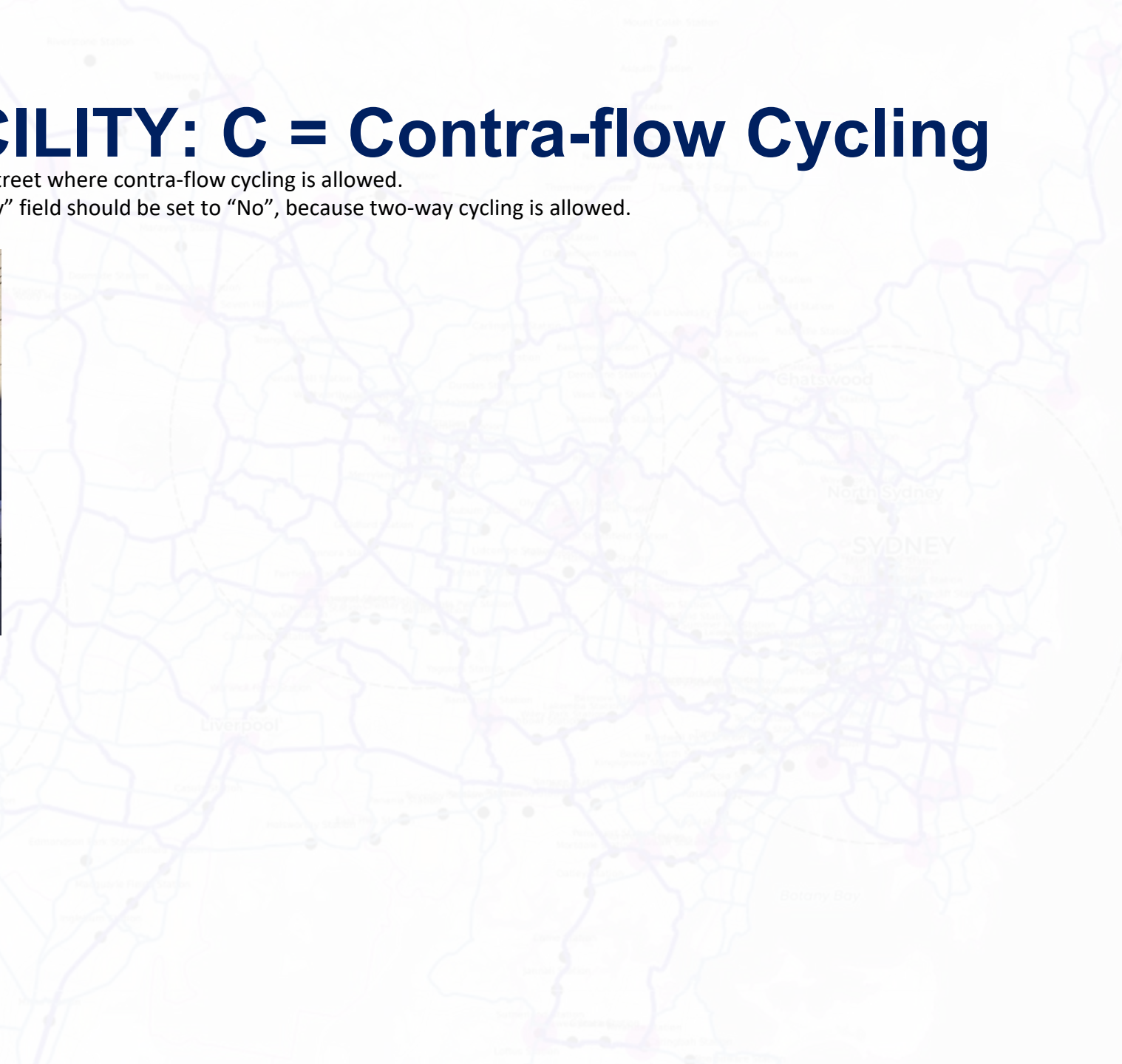


FACILITY: C = Contra-flow Cycling

A one-way street where contra-flow cycling is allowed.

The "oneway" field should be set to "No", because two-way cycling is allowed.

INFRA = R (road)





FACILITY: D = Dirt Users

Dirt or grass that forms an informal desire line or a trail such as a fire trail. Formal paths use Shared Path with surface=unsealed.

INFRA = P (path)



INFRA = R (road)



INFRA = S (steps)

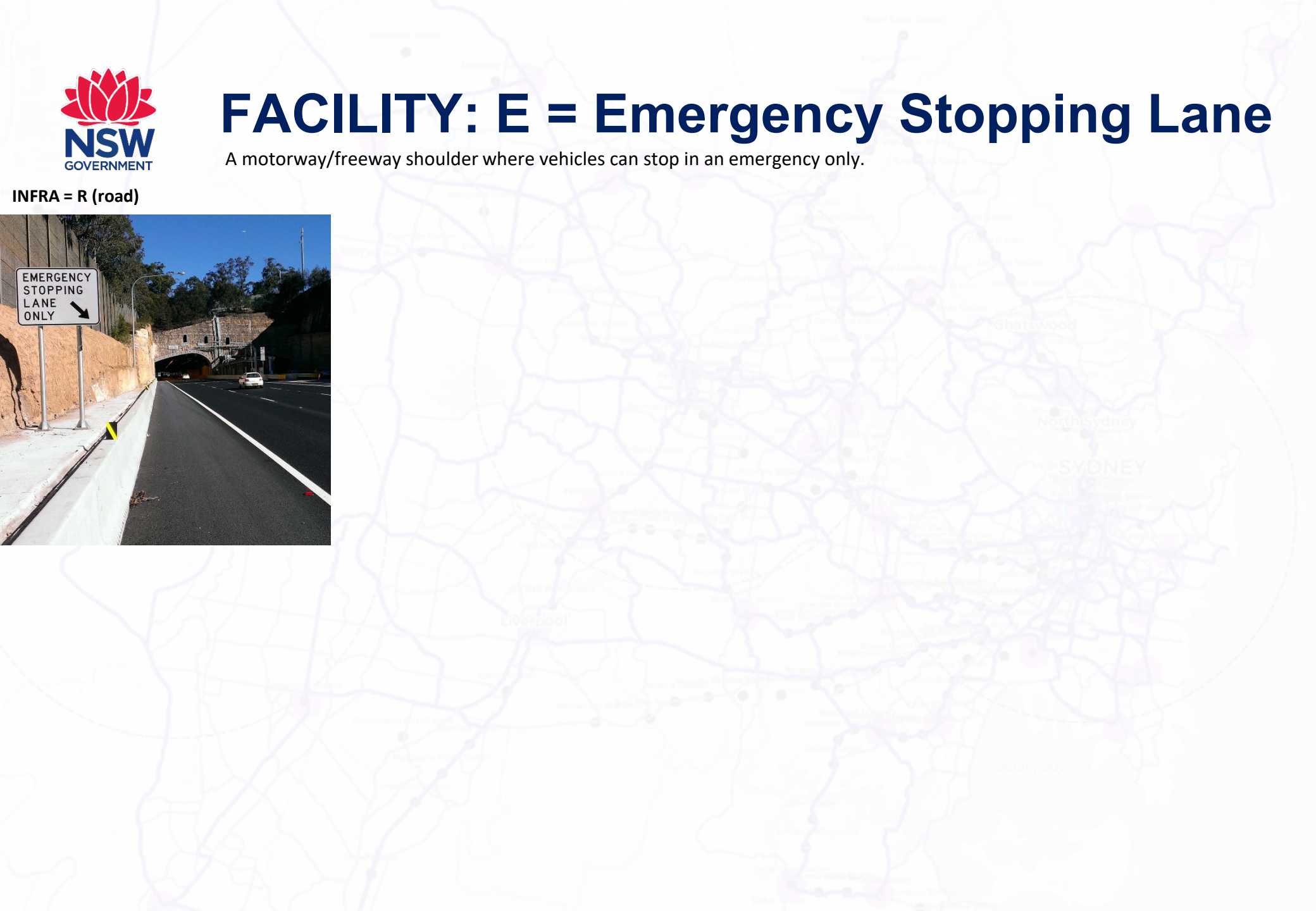




FACILITY: E = Emergency Stopping Lane

A motorway/freeway shoulder where vehicles can stop in an emergency only.

INFRA = R (road)





FACILITY: F = Foot Only

INFRA = B (bridge/boardwalk)

INFRA = C (culvert/tunnel)

INFRA = E (escalator)

INFRA = L (lift) (if less than 1.8m depth)

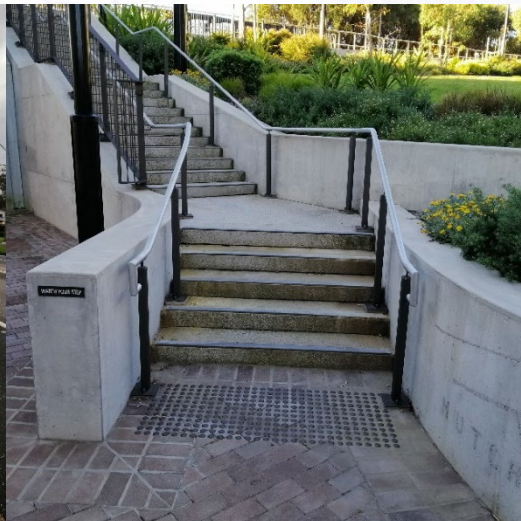


INFRA = M (median crossing)

INFRA = P (path)

INFRA = S (steps)

INFRA = T (Traffic Control Sig. Crossing)





FACILITY: F = Foot Only

INFRA = U (Unsignalised crossing)



INFRA = W (wombat crossing)



INFRA = Z (zebra/pedestrian crossing)





FACILITY: G = Separated/Segregated

INFRA = P (path)

Rest similar to Shared Path

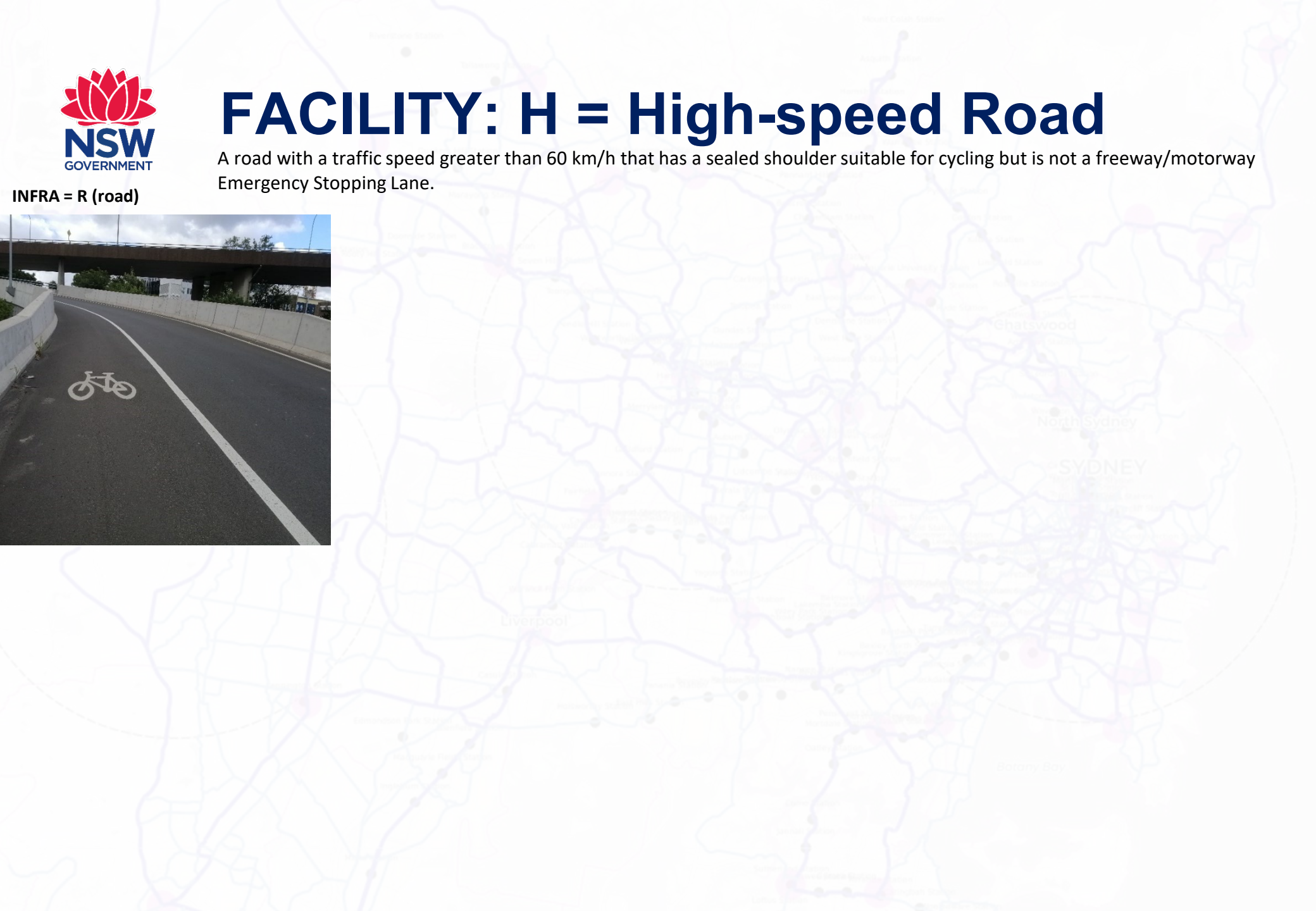




FACILITY: H = High-speed Road

A road with a traffic speed greater than 60 km/h that has a sealed shoulder suitable for cycling but is not a freeway/motorway Emergency Stopping Lane.

INFRA = R (road)





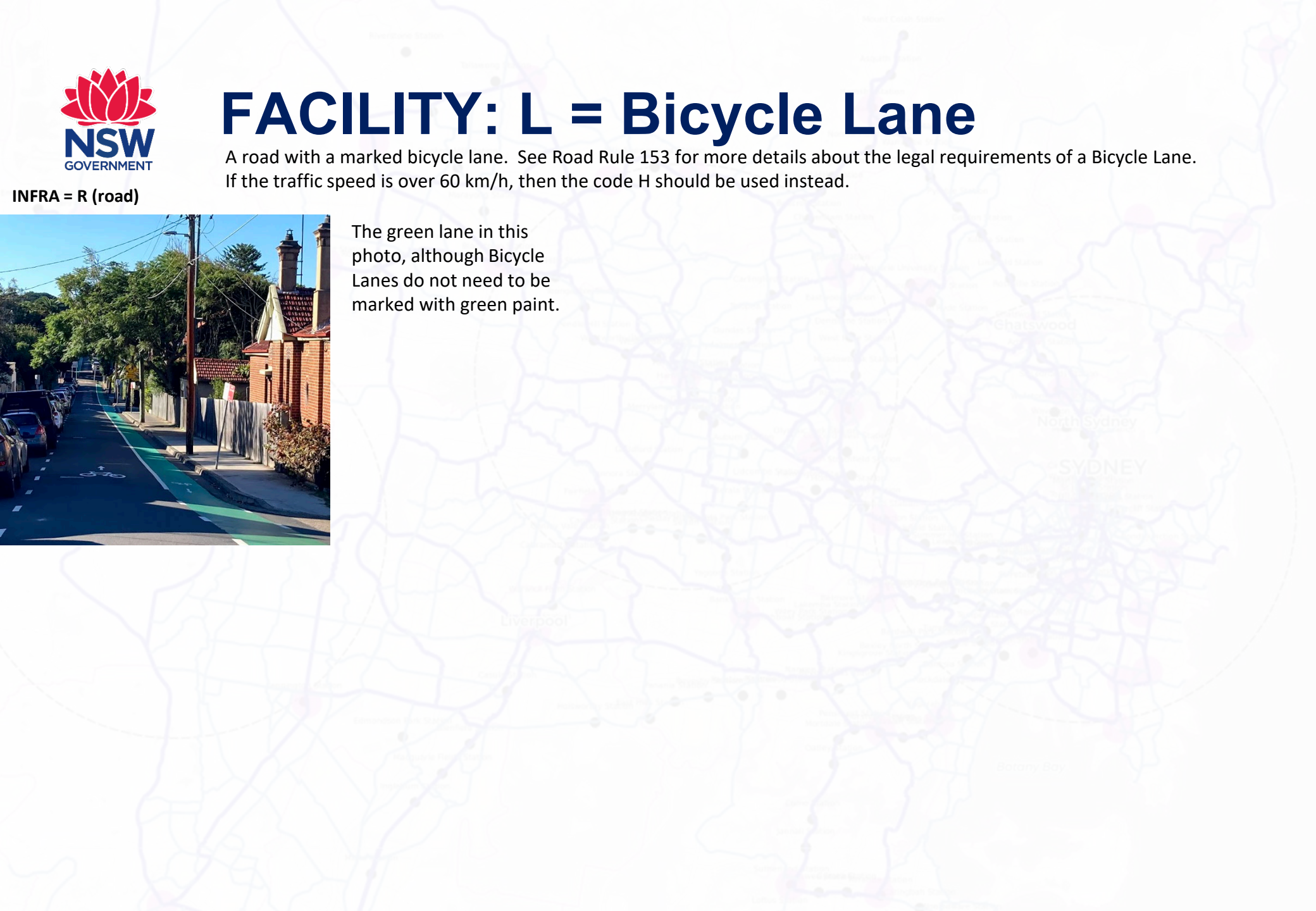
FACILITY: L = Bicycle Lane

A road with a marked bicycle lane. See Road Rule 153 for more details about the legal requirements of a Bicycle Lane. If the traffic speed is over 60 km/h, then the code H should be used instead.

INFRA = R (road)



The green lane in this photo, although Bicycle Lanes do not need to be marked with green paint.

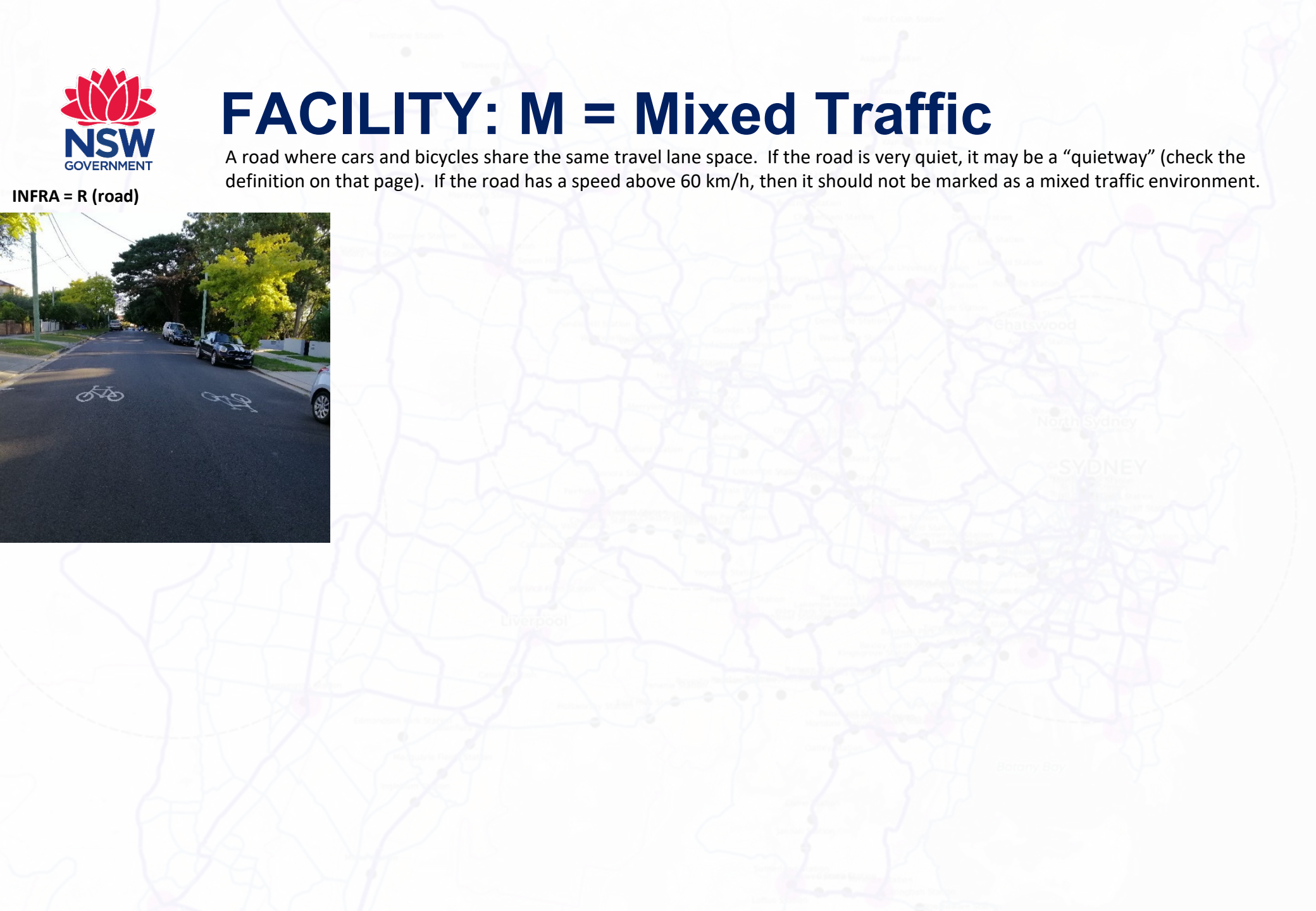




FACILITY: M = Mixed Traffic

A road where cars and bicycles share the same travel lane space. If the road is very quiet, it may be a “quietway” (check the definition on that page). If the road has a speed above 60 km/h, then it should not be marked as a mixed traffic environment.

INFRA = R (road)





FACILITY: O = Bus/Tram Only Lane

INFRA = R (road)

INFRA = R (road)





FACILITY: P = Parking Lane

INFRA = R (road)





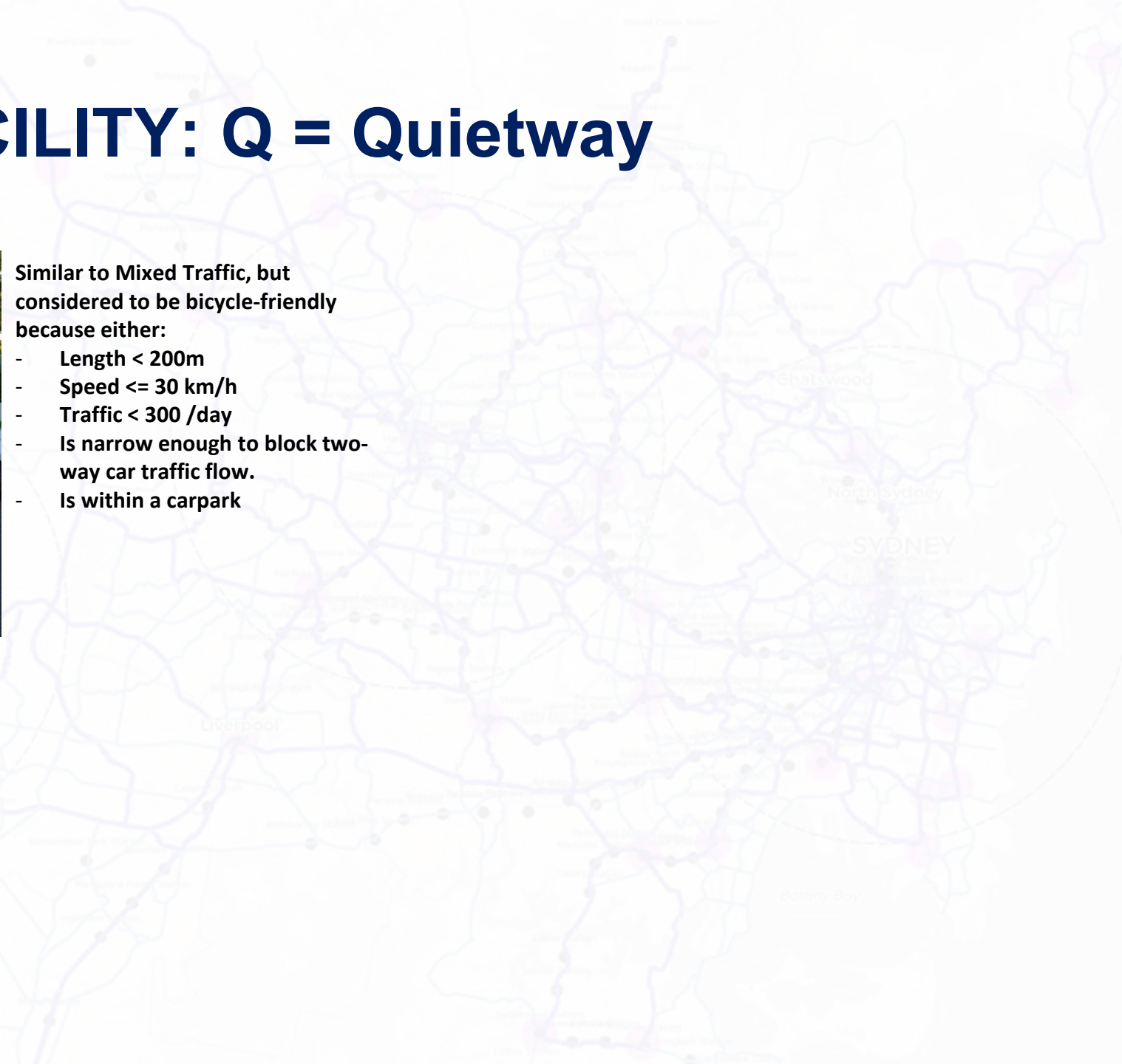
FACILITY: Q = Quietway

INFRA = R (road)



Similar to Mixed Traffic, but considered to be bicycle-friendly because either:

- Length < 200m
- Speed \leq 30 km/h
- Traffic < 300 /day
- Is narrow enough to block two-way car traffic flow.
- Is within a carpark



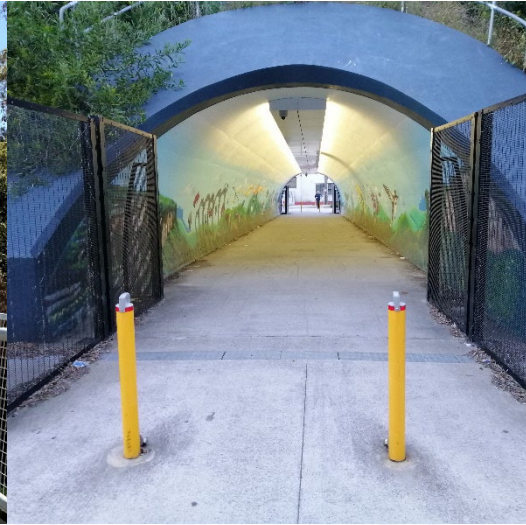


FACILITY: S = Shared Use

INFRA = B (bridge/boardwalk)



INFRA = C (culvert/tunnel)



INFRA = L (lift) (more than 1.8m depth)



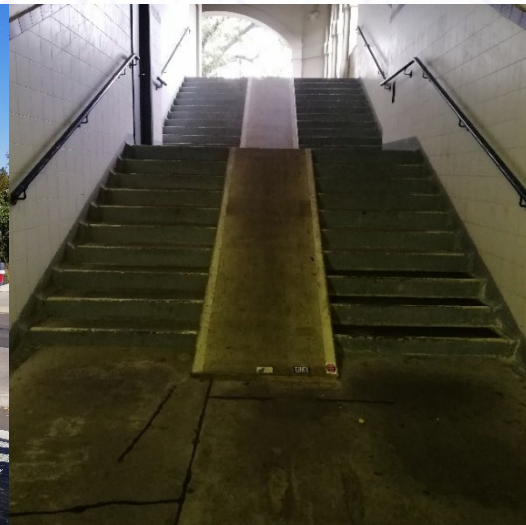
INFRA = P (path)



INFRA = M (median crossing)



INFRA = S (steps)



INFRA = T (Traffic Control Sig. Crossing)



INFRA = W (wombat crossing)





FACILITY: T = Tram Lane (bicycles permitted)

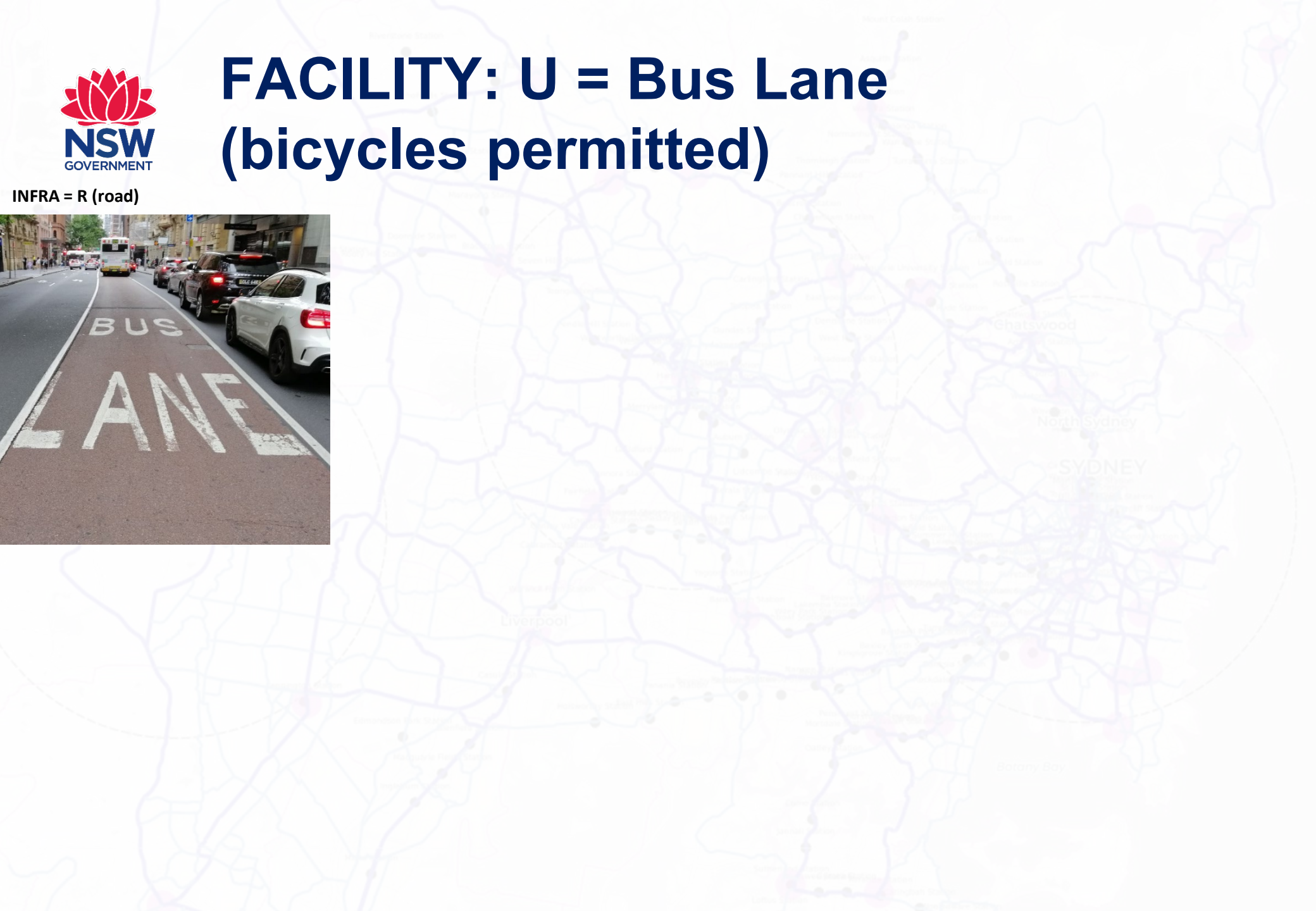
INFRA = R (road)





FACILITY: U = Bus Lane (bicycles permitted)

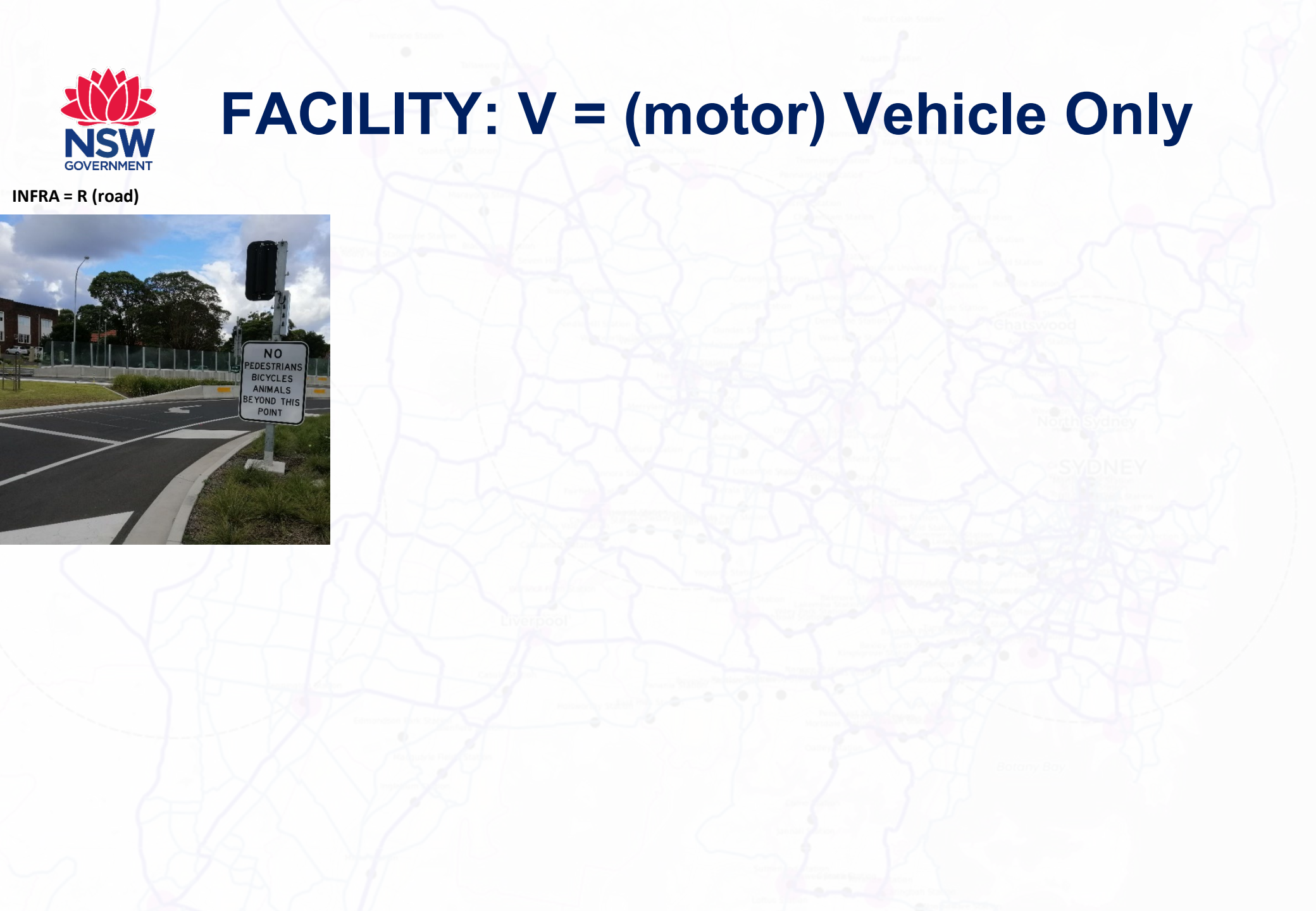
INFRA = R (road)





FACILITY: V = (motor) Vehicle Only

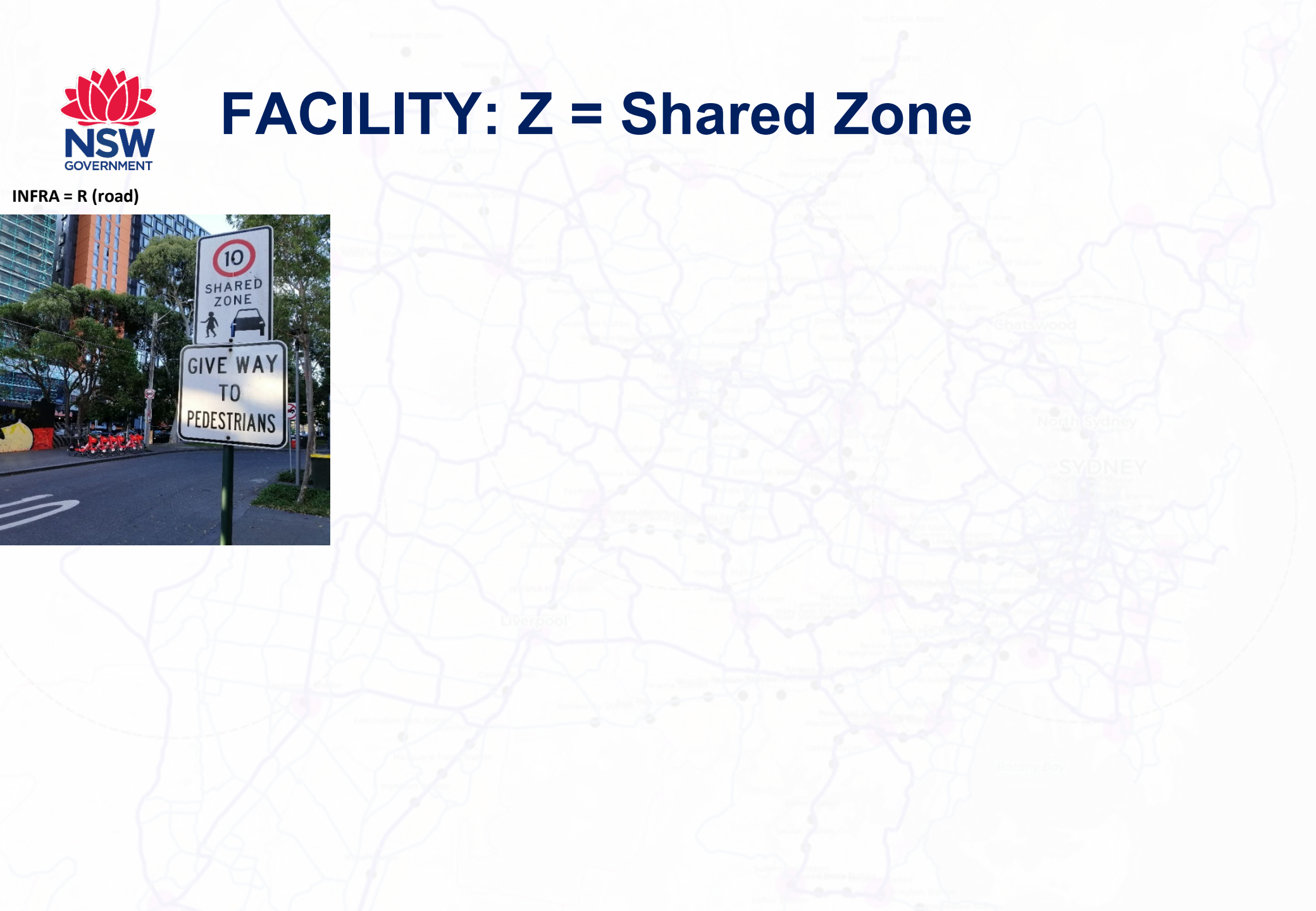
INFRA = R (road)





FACILITY: Z = Shared Zone

INFRA = R (road)





INFRA Codes

B Bridge/Boardwalk

C Culvert/Tunnel

E Escalator

F Ferry/Boat

K Kerb step

L Lift/Elevator

M Median refuge

N No infrastructure

P Path

R Road

S Steps

T Traffic control signal crossing

U Unsignalised crossing

W Wombat crossing/threshold

Z Zebra/pedestrian crossing



INFRA: B = Bridge/Boardwalk

FACILITY = B
Bicycles Only



FACILITY = F
Foot Only



FACILITY = G
Separated



FACILITY = S
Shared Use





INFRA: C = Culvert/Tunnel

FACILITY = B
Bicycles Only



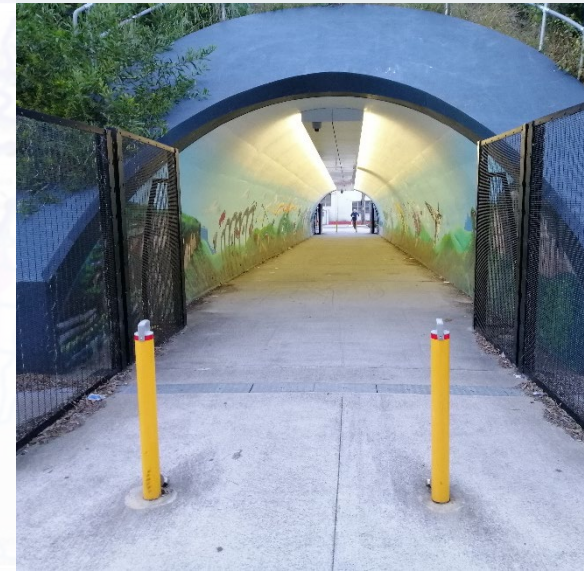
FACILITY = F
Foot Only



FACILITY = G
Separated



FACILITY = S
Shared Use





INFRA: E = Escalator

FACILITY = F
Foot Only





INFRA: F = Ferry/Boat

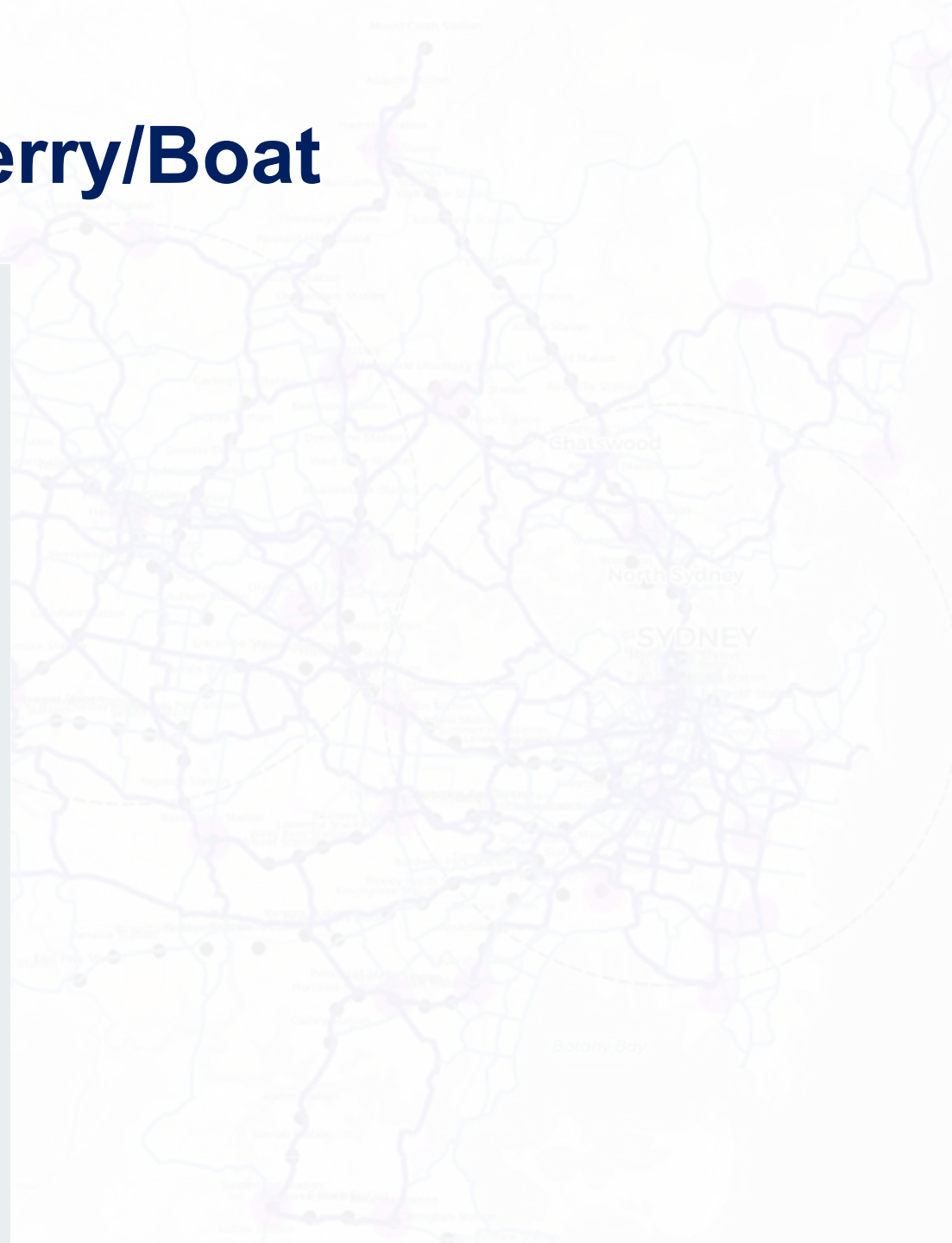
FACILITY = F
Foot Only

**A boat or ferry route
that does not allow
bicycles.**



FACILITY = S
Shared Use

**A boat or ferry route
that allows bicycles.**





INFRA: K = Kerb Step

FACILITY = B
Bicycles Only



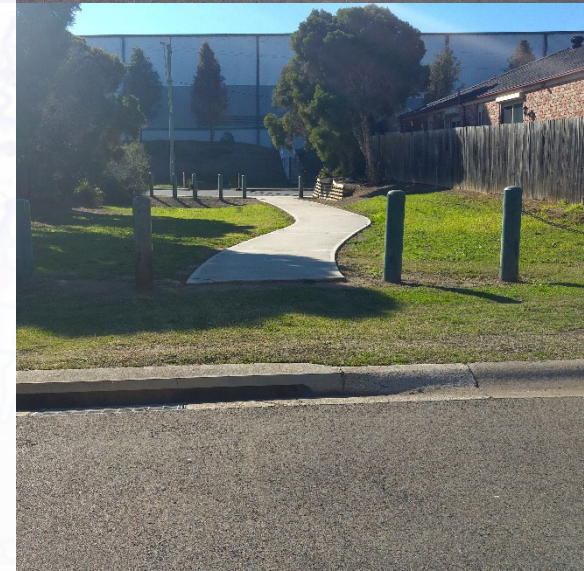
FACILITY = G
Separated



FACILITY = F
Foot Only



FACILITY = S
Shared Use





INFRA: L = Lift/Elevator

FACILITY = F Foot Only

A small elevator with depth less than 1.8 m and therefore, not suitable for a bicycle.



FACILITY = S Shared Use

A large elevator with depth larger than 1.8 m and therefore suitable for a bicycle.





INFRA: M = Median Refuge

FACILITY = B

Bicycles Only

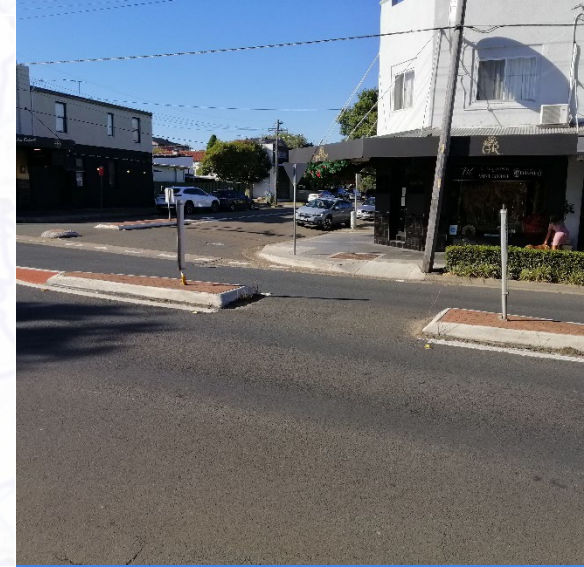
Medians that are at least 1.8m in depth and are on a route connecting "Bicycle Path" types.



FACILITY = F

Foot Only

Medians that are not wide enough to store a bicycle.



FACILITY = G

Separated

Medians that are at least 1.8m in depth and are on a route connecting "Separated Path" types.



FACILITY = S

Shared Use

Medians that are at least 1.8m in depth and are on a route connecting "Shared Use Path" types.





INFRA: P = Pathway

FACILITY = B
Bicycles Only



FACILITY = F
Foot Only



FACILITY = G
Separated



FACILITY = S
Shared Use



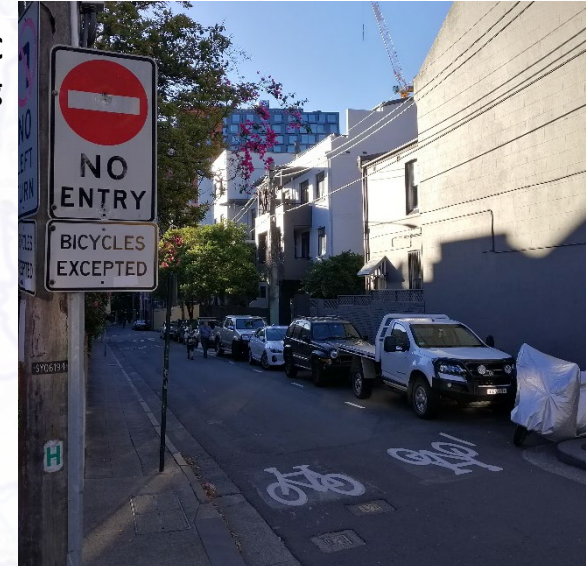


INFRA: R = Road

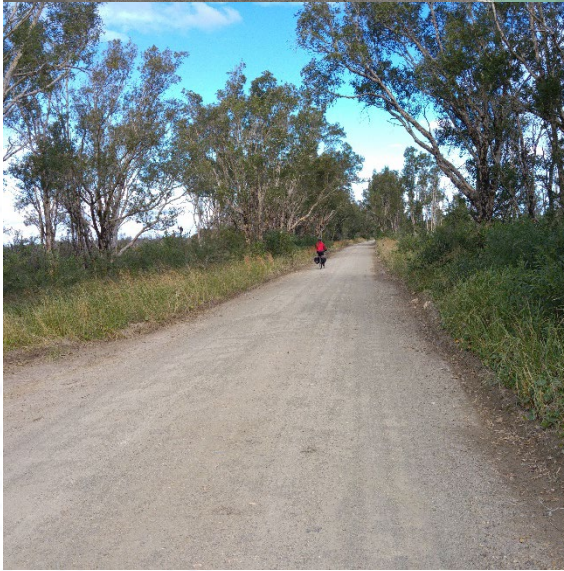
FACILITY = A
Bicycle Storage Area



FACILITY = C
Contra-flow cycling



FACILITY = D
Dirt Users





INFRA: R = Road

FACILITY = E
Emergency stopping
lane



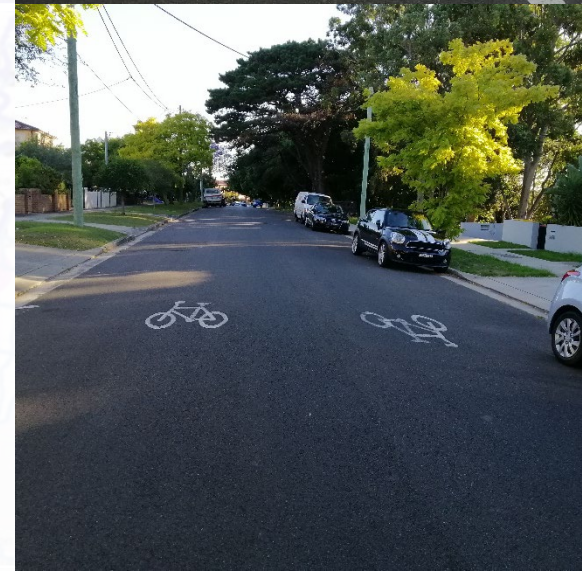
FACILITY = H
High-speed shoulder



FACILITY = L
Bicycle Lane



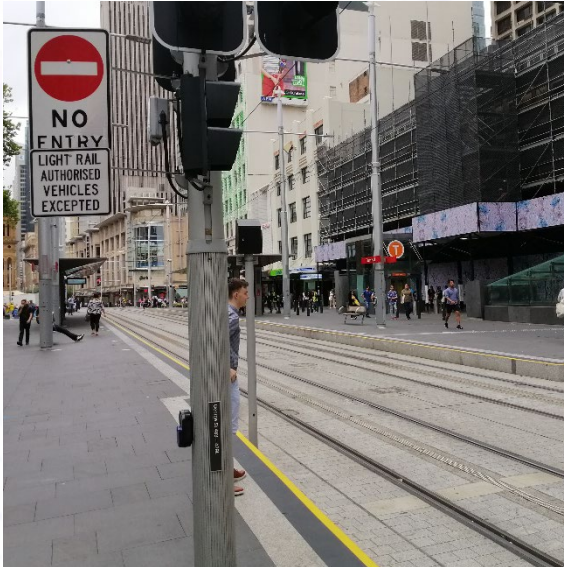
FACILITY = M
Mixed Traffic





INFRA: R = Road

FACILITY = O
Bus or Tram Only



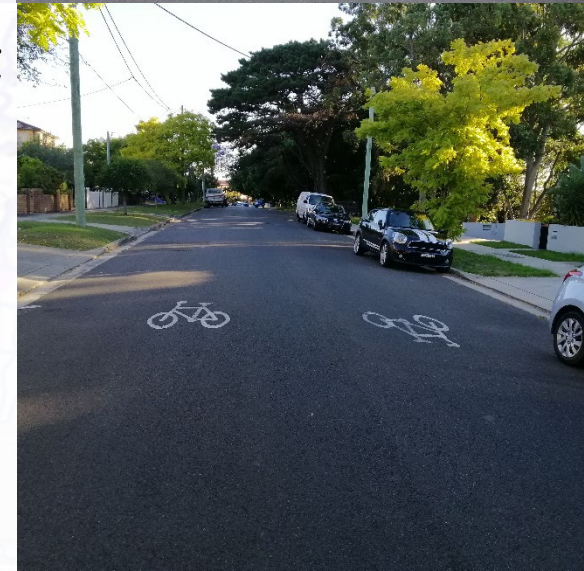
FACILITY = O
Bus or Tram only



TYPE = P
Parking Lane



TYPE = Q
Quietway





INFRA: R = Road

FACILITY = T
Tram Lane
(bicycle permitted)



FACILITY = U
Bus Lane
(bicycles permitted)



TYPE = V
Motor Vehicle Only



TYPE = Z
Shared Zone

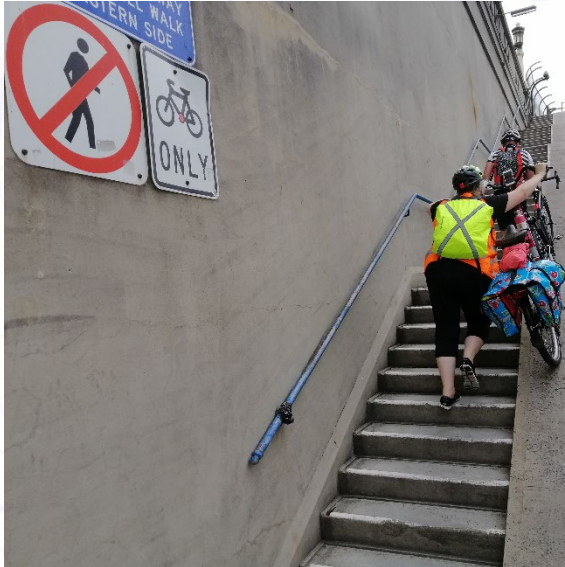




INFRA: S = Steps

FACILITY = B Bicycle Only

Steps on a bicycle-only pathway (should always have a wheel ramp).



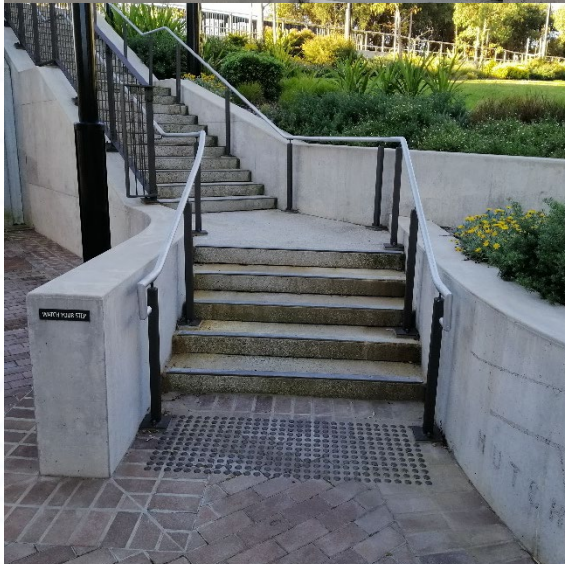
FACILITY = D Dirt Users

Steps on a dirt path (formal or informal steps).



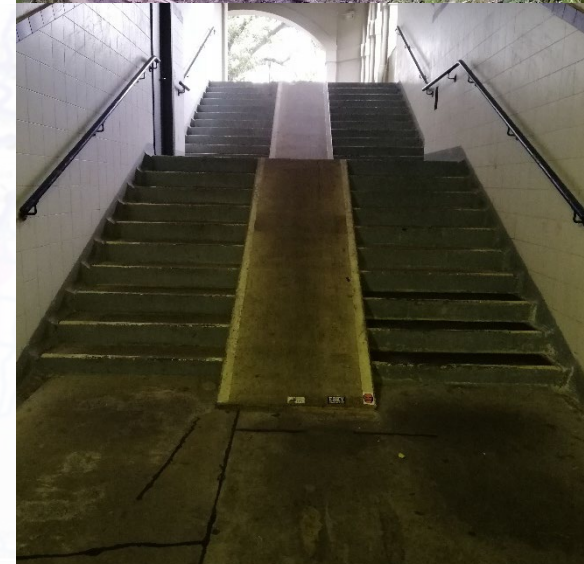
FACILITY = F Foot Pathway

Steps without a wheel ramp.



FACILITY = S Shared Pathway

Steps with a wheel ramp.





INFRA: T = Traffic Control Signal

FACILITY = B
Bicycle Only



FACILITY = F
Foot Only



FACILITY = S
Shared Use





INFRA: U = Unsignalised Crossing

FACILITY = B
Bicycle Only



FACILITY = F
Foot Only



FACILITY = S
Shared Use





INFRA: W = Wombat Crossing

Used for wombat crossings, raised thresholds or continuous footpaths.

FACILITY = B
Bicycle Only

If either side of the crossing is a Bicycle Path, then set the facility to B for the crossing.



FACILITY = F
Foot Only



FACILITY = G
Separated Use

If either side of the crossing is a Separated Path, then set the facility to G for the crossing.



FACILITY = S
Shared Use





INFRA: Z = Zebra Crossing

Used for zebra crossings at street entrances or mid-block.

FACILITY = B
Bicycle Only



FACILITY = F
Foot Only



FACILITY = G
Separated Path

This is not strictly a "zebra crossing", but it is the Separated Path equivalent of a Footpath Zebra Crossing.



FACILITY = S
Shared Use

