

Stop guide

Next services information

Visit transportnsw.info or scan this QR code for next services information



Transport connections

L L2 Randwick Line services operate Monday to Sunday 05:00 to 01:00

From 7:00am to 7:00pm weekdays, services will operate every 8 minutes between Circular Quay and Randwick.

B Bus services depart from: Bus stop 203135 towards Bondi Junction, City Museum, Glebe Point, Prince of Wales Hospital, Randwick and Wollri Creek Bus stop 2031158 towards Coogee Beach, Eastgardens, Maroubra Beach and Prince of Wales Hospital.

For more details and of services from other bus stops nearby, visit transportnsw.info

Customer assistance

EMERGENCY HELP Emergency Help Points link directly to staff who can assist you. Penalties may apply for misuse of Emergency Help Points.

T-Switch This stop is equipped with hearing loops below the shelter canopy. Use a T-Switch hearing aid to more easily hear customer announcements.

Lost items To report lost items visit transdevsydney.com.au or call 02 8584 5288, Monday to Friday 08:30 to 17:00 (excluding public holidays). For hearing or speech impairments, please contact the National Relay Service on 133 677 or visit relayservice.gov.au

Tickets

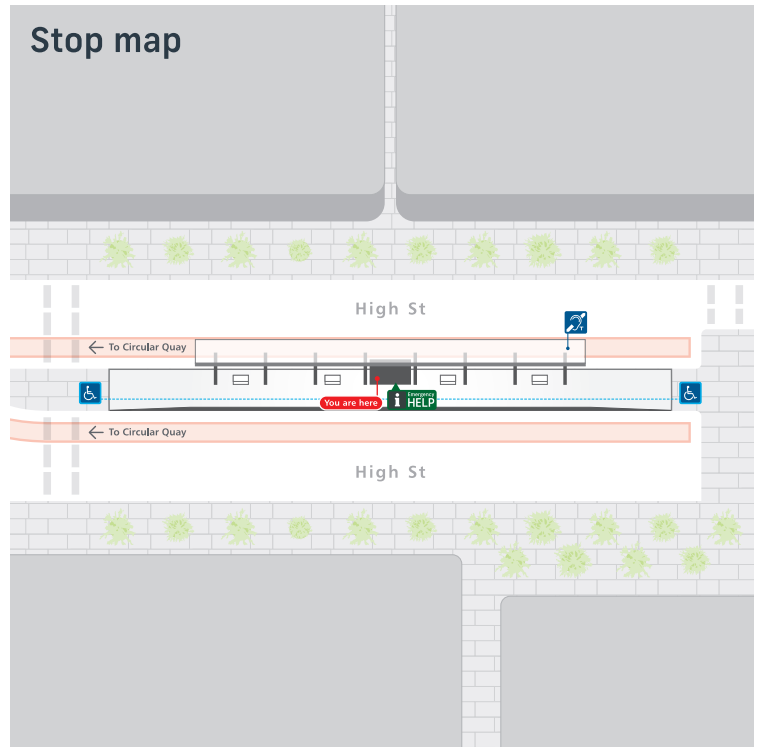
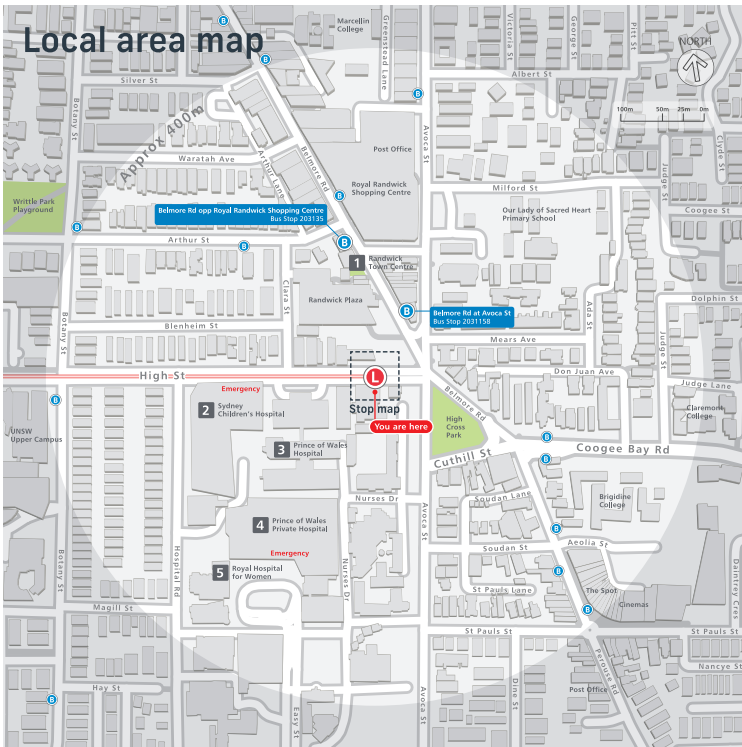
Light rail services For light rail services, you can use an Opal card, a contactless credit or debit card or a linked device to pay for travel by tapping on and tapping off at the Opal readers on each platform.

Plan ahead Plan ahead and top up or purchase your Opal card online or from an Opal retailer. Visit transportnsw.info for more information.

Tap on and tap off Tap on and tap off to avoid a fine of up to \$550.00.

Destinations

- 1 Randwick Town Centre
- 2 Sydney Children's Hospital
- 3 Prince of Wales Hospital
- 4 Prince of Wales Private Hospital
- 5 Royal Hospital for Women



Sydney light rail network

L Light Rail

Sydney light rail lines

L1 Dulwich Hill Line
Dulwich Hill
Central

L2 Randwick Line
Circular Quay
Randwick

L3 Kingsford Line
Circular Quay
Juniors Kingsford



Copyright © 2020 Transport for NSW