

Stop guide

Next services information

Visit transportnsw.info or scan this QR code for next services information



Transport connections

- L1 Dulwich Hill Line service frequency:**
Monday to Friday:
 6am to 7am - 15 minutes
 7am to 10am - 8 minutes
 10am to 3pm - 10 minutes
 3pm to 7pm - 8 minutes
 7pm to 11pm (midnight on Friday) - 15 minutes
Saturday:
 6am to 9am - 15 minutes
 9am to 9pm - 10 minutes
 9pm to 11pm - 15 minutes
Sunday and Public Holidays:
 6am to 9am - 15 minutes
 9am to 7pm - 10 minutes
 7pm to 11pm - 15 minutes

- B** Bus services depart from: Bus stop 200919 towards Bondi Junction
 For more details and of services from other bus stops nearby visit transportnsw.info

Customer assistance

- Emergency HELP** Emergency Help Points link directly to staff who can assist you. Penalties may apply for misuse of Emergency Help Points.
- T-Switch** This stop is equipped with hearing loops and coverage areas are shown on the Stop map below. Use a T-Switch hearing aid to more easily hear customer announcements.

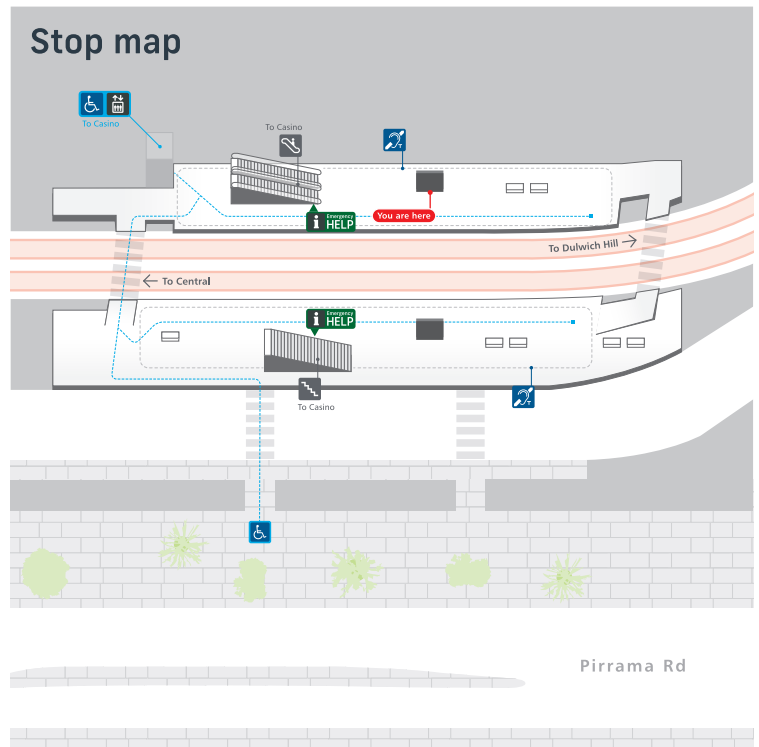
To report lost items visit transportnsw.info or call 02 8584 5288, Monday to Friday 09:00 to 17:00 (excluding public holidays). For hearing or speech impairments, please contact the National Relay Service on 133 677 or visit relayservice.gov.au

Tickets

- For light rail services, you can use an Opal card, a contactless credit or debit card or a linked device to pay for travel by tapping on and tapping off at the Opal readers on each platform.
- Plan ahead and top up or purchase your Opal card online or from an Opal retailer. Visit transportnsw.info for more information.
- Tap on and tap off, every time.** Remember to both tap on and tap off to avoid a fine of up to \$550.00.

Destinations

- 1 Metcalfe Park
- 2 Australian National Maritime Museum
- 3 Pyrmont Bay Park
- 4 The Star Casino



Sydney light rail network

L Light Rail

Sydney light rail lines

- L1 Dulwich Hill Line**
Dulwich Hill
Central
- L2 Randwick Line**
Circular Quay
Randwick
- L3 Kingsford Line**
Circular Quay
Juniors Kingsford



Copyright © 2020 Transport for NSW