

Stop guide

Next services information

Visit transportnsw.info or scan this QR code for next services information



Transport connections

L L2 Randwick Line and L3 Kingsford Line service frequency:
Monday to Friday
5am to 7am - 6 minutes
7am to 7pm - 4 minutes
7pm to 10pm - 5 minutes
10pm to 1am - 6 minutes
Saturday, Sunday and Public Holidays:
5am to 7am - 8 minutes
7am to 7pm - 5 minutes
7pm to 1am - 5 minutes (Saturday)
7pm to 1am - 8 minutes (Sunday, Public Holidays)

B Bus services depart from Town Hall Bus Interchange. Bus services operate to the Northern Suburbs, Inner West, Eastern Suburbs, Hills District and Victoria Road, as well as towards Parramatta.
i For details of these services refer to the Find your way information points marked on the Local area map below.
For more details of other bus stops nearby, visit transportnsw.info

A taxi rank is located on Bathurst St at George St, adjacent to St Andrew's Cathedral.

Customer assistance

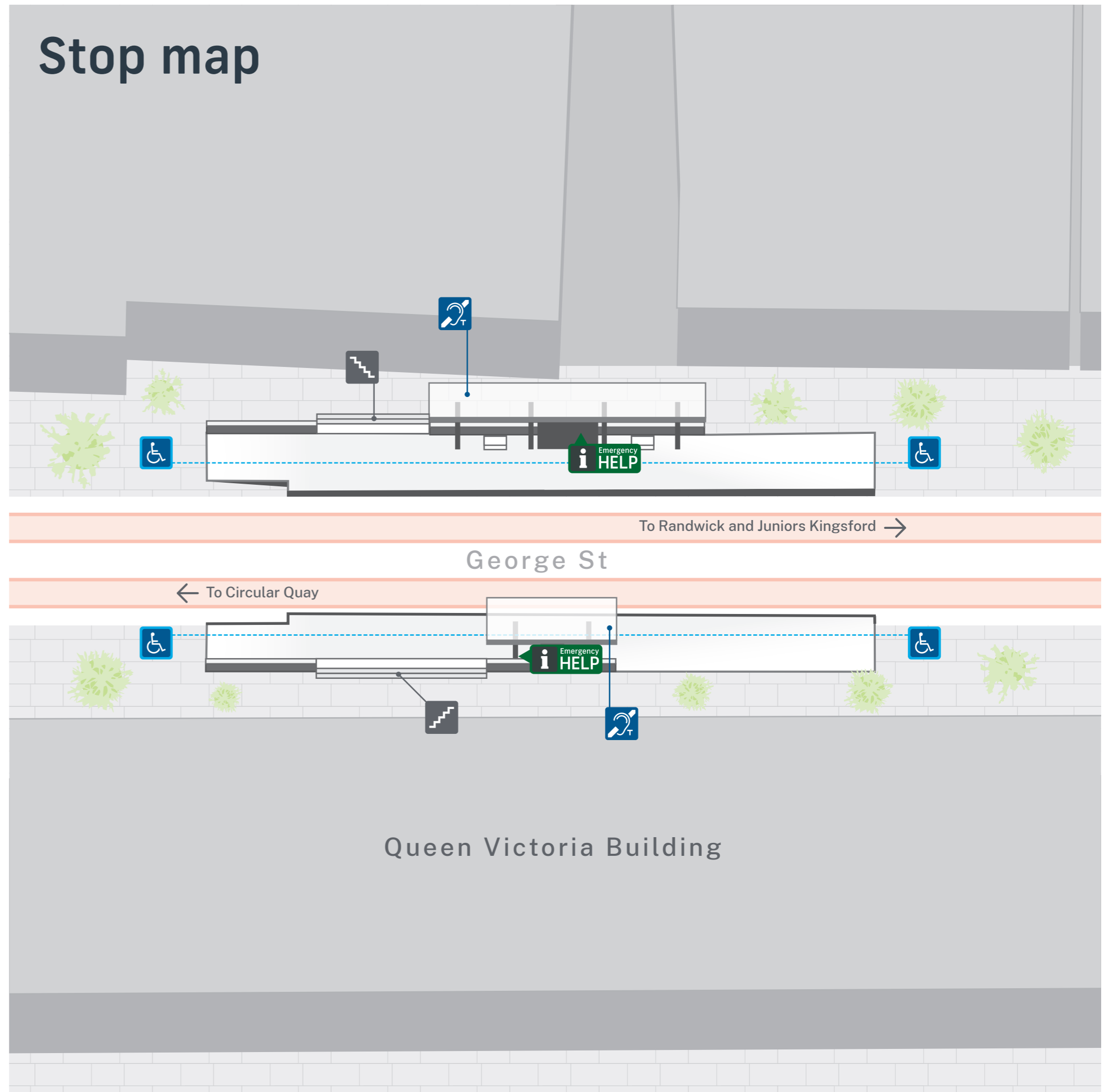
Emergency HELP Emergency Help Points link directly to staff who can assist you. Penalties may apply for misuse of Emergency Help Points.
T-Switch This stop is equipped with hearing loops below the shelter canopy. Use a T-Switch hearing aid to more easily hear customer announcements.
Lost items To report lost items visit transportnsw.info or call 02 8584 5288. Monday to Friday 09:00 to 17:00 (excluding public holidays). For hearing or speech impairments, please contact the National Relay Service on 133 677 or visit relayservice.gov.au

Tickets

For light rail services, you can use an Opal card, a contactless credit or debit card or a linked device to pay for travel by tapping on and tapping off at the Opal readers on each platform.
 Plan ahead and top up or purchase your Opal card online or from an Opal retailer. Visit transportnsw.info for more information.
 Tap on and tap off, every time. Remember to both tap on and tap off to avoid a fine of up to \$550.00.

Destinations

- 1 Supreme Court of NSW
- 2 St Mary's Cathedral
- 3 Hyde Park
- 4 Sydney Tower
- 5 Pitt Street Mall
- 6 State Theatre
- 7 Queen Victoria Building
- 8 Sydney Town Hall
- 9 Sea Life Sydney Aquarium
- 10 Darling Harbour



Sydney light rail network

L Light Rail

Sydney light rail lines

- L1** Dulwich Hill Line
Dulwich Hill
Central
- L2** Randwick Line
Circular Quay
Randwick
- L3** Kingsford Line
Circular Quay
Juniors Kingsford



Copyright © 2020 Transport for NSW