

# Stop guide

Next services information

Visit [transportnsw.info](http://transportnsw.info) or scan this QR code for next services information



## Transport connections

**L** L4 Westmead & Carlingford Line services operate Monday to Sunday 05:00 to 01:00. For next services information refer to information displays on platforms.

## Customer assistance

**Emergency HELP** Emergency Help Points link directly to staff who can assist you. Penalties may apply for misuse of Emergency Help Points.

**T-Switch** This stop is equipped with hearing loops below the shelter canopy. Use a T-Switch hearing aid to more easily hear customer announcements.

**Lost items** To report lost items visit [transportnsw.info](http://transportnsw.info). For hearing or speech impairments, please contact the National Relay Service on 133 677 or visit [relayservice.gov.au](http://relayservice.gov.au).

## Tickets

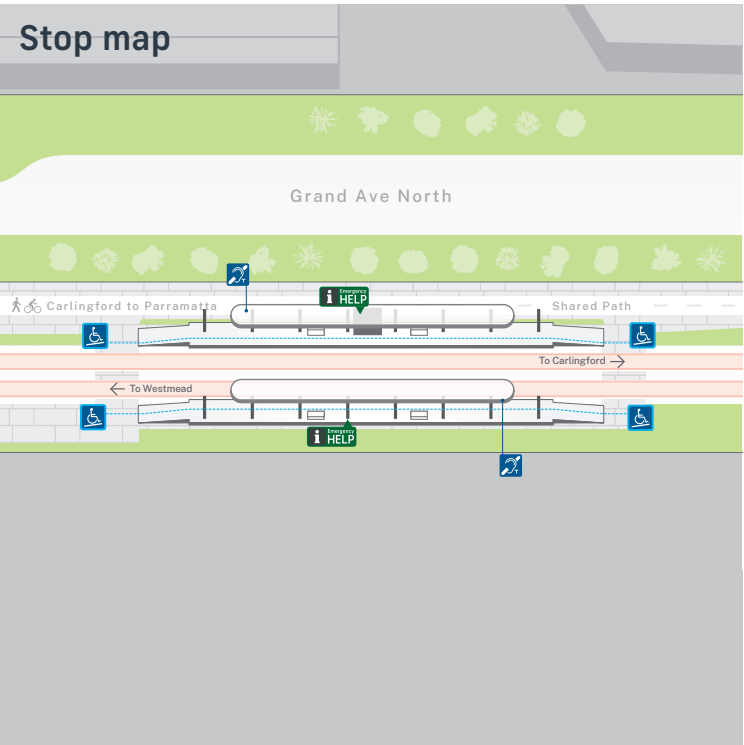
**Opal** For light rail services, you can use an Opal card, a contactless credit or debit card or a linked device to pay for travel by tapping on and tapping off at the Opal readers on each platform.

**Plan ahead** Plan ahead and top up or purchase your Opal card online or from an Opal retailer. Visit [transportnsw.info](http://transportnsw.info) for more information.

**Tap on and tap off** Tap on and tap off, every time. Remember to both tap on and tap off to avoid a fine of up to \$550.00.

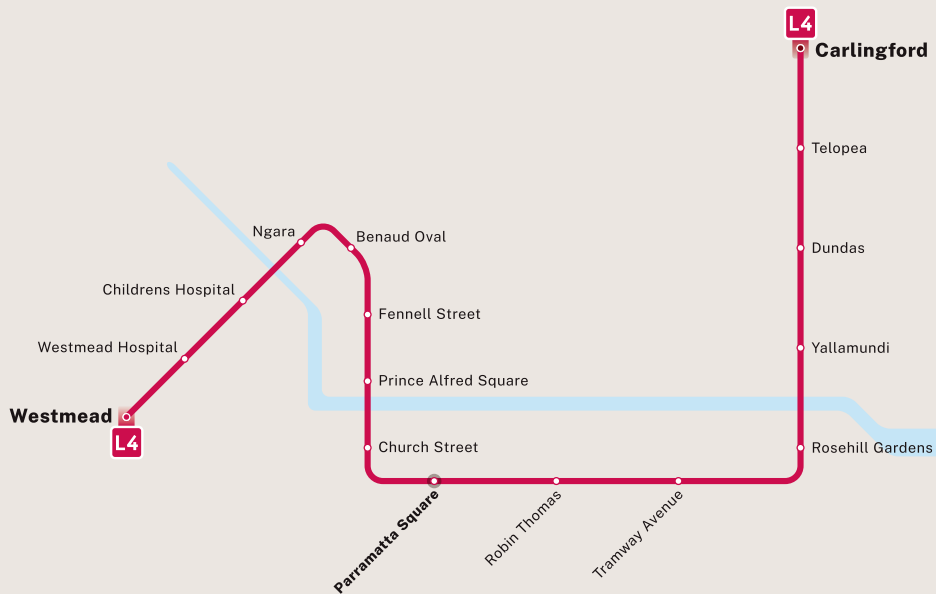
## Destinations

**1** Rosehill Gardens Racecourse



## Parramatta light rail network

**L** Light Rail



Parramatta light rail lines



End of line  
Interchange  
Stop

**NORTH**

All light rail stops are accessible. Check trip planners for light rail services and connections.