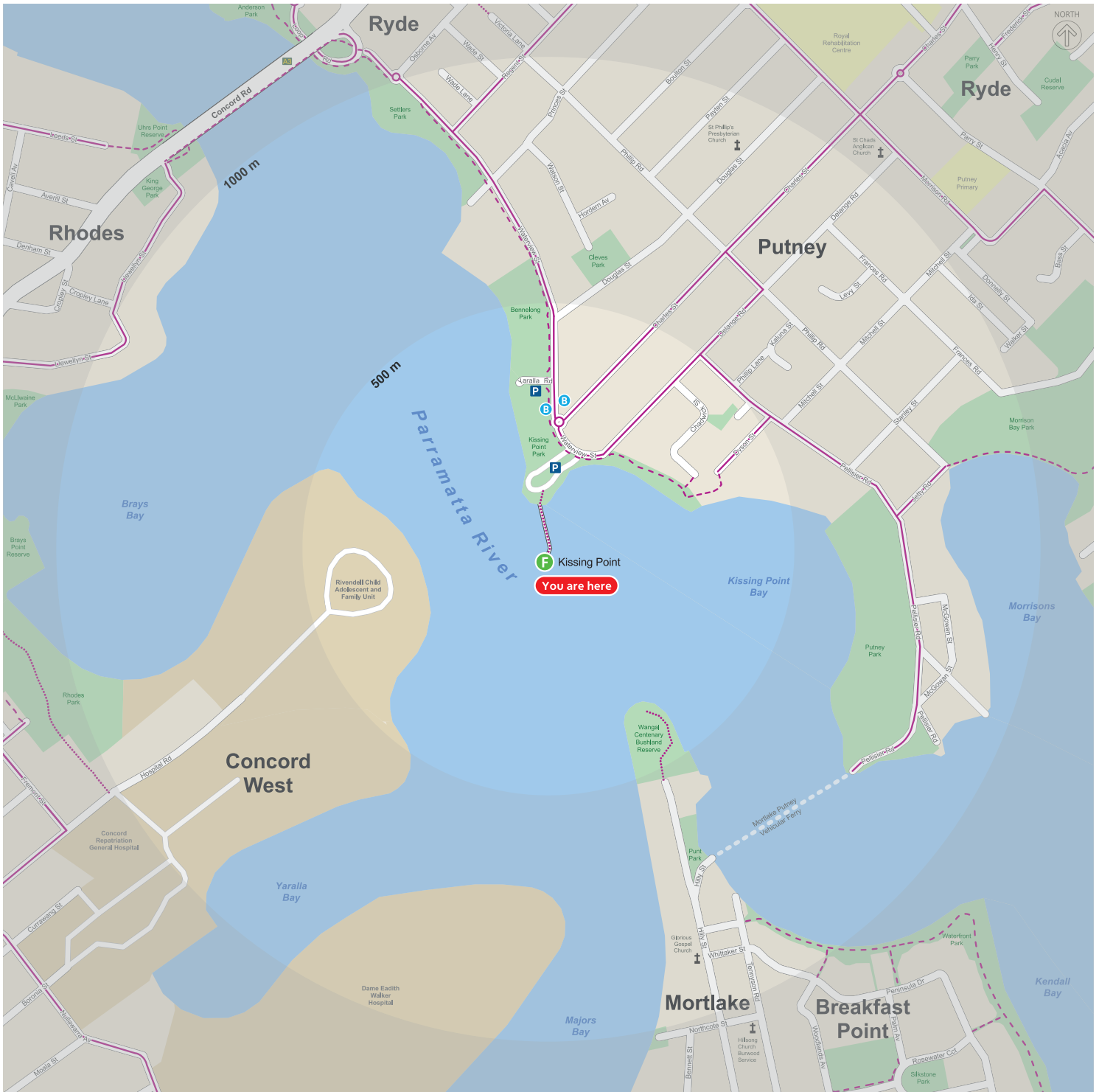


Local area map



B Bus stop

P Car park

— On / off road cycling path

F Ferry wharf

... Walking path

- - - Shared cycling and walking path

0 250 metres

Disclaimer: Information in this map is based on the latest details at the time of printing, and is subject to change without notice. January 2015.

StreetPro © Pitney Bowes Software Pty Ltd [2014] based on data provided under license from PSMA Australia Limited. Wilhere's StreetNet Display and Facility POI data provided under licence from Sensis Pty Ltd [2014]. Cycle Path data from Roads & Maritime Services (RMS).

It's easy to travel with us



Plan your trip
Visit transportnsw.info



Opal is your ticket to travel
Get it before you travel from a shop nearby or visit transportnsw.info