

Transport

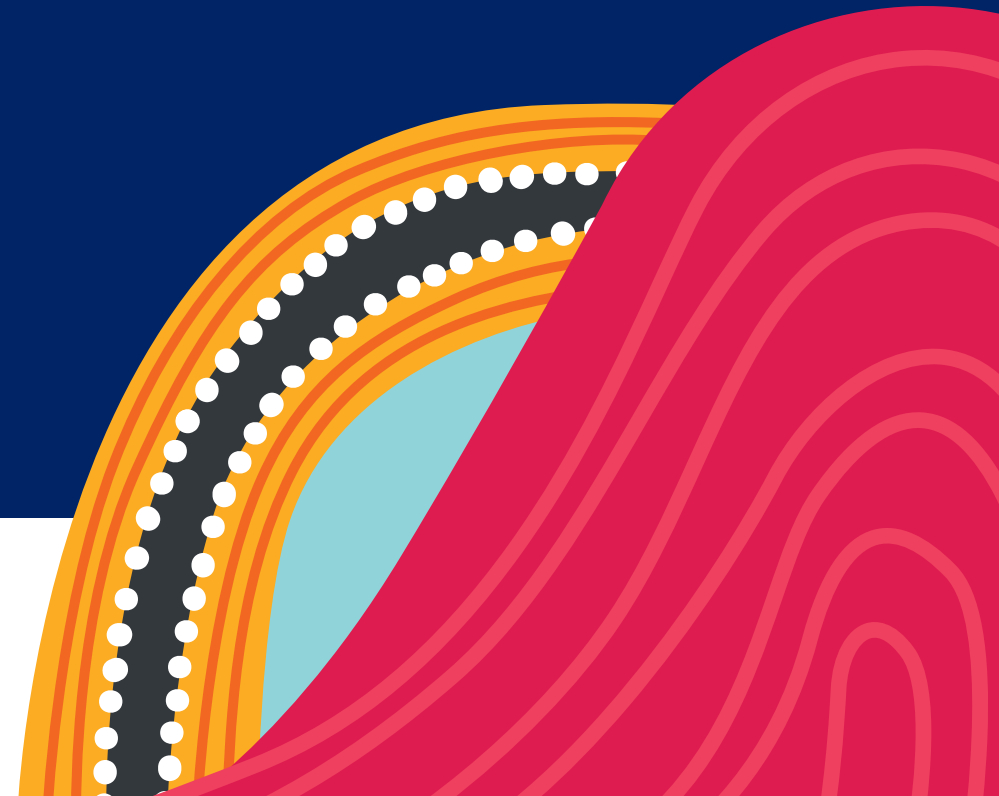
Open Data Platform Replacement

Briefing Pack



transport.nsw.gov.au

OFFICIAL



Sections

- 1** **What's happening and when**

- 2** **Why we are moving to a new platform**

- 3** **What's changing vs staying the same**

- 4** **What you need to do**

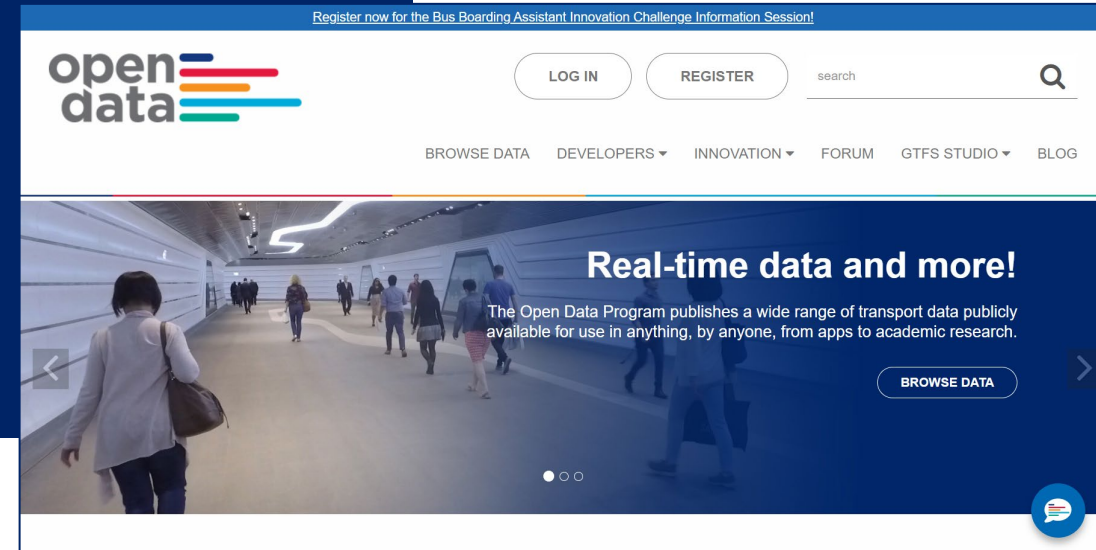
- 5** **Testing the new solution**

What's happening and when



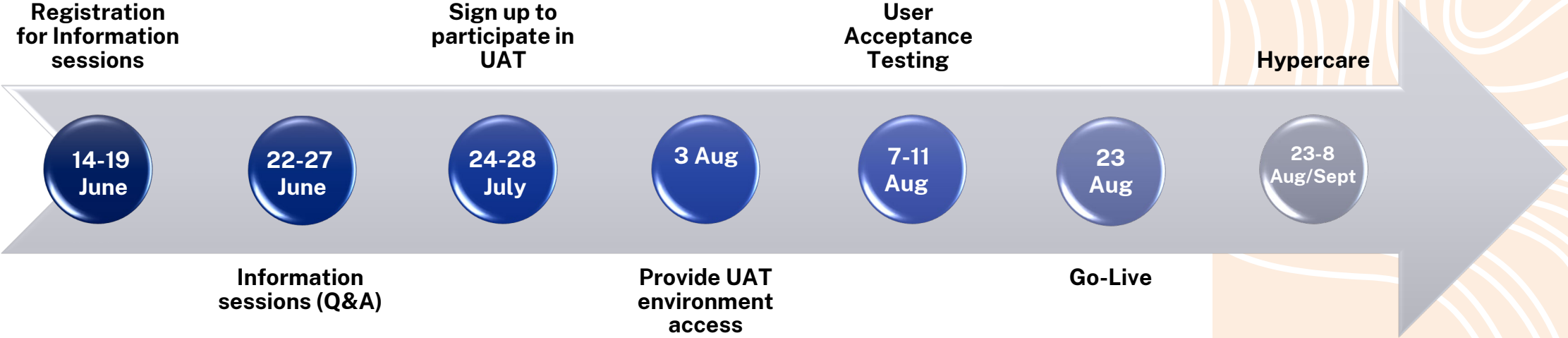
What is happening?

- Current platform (DKAN) will be operating with reduced support from the 1 August as it approaches end of life.
- Current platform will be replaced by new platform (CKAN)
- Other linked components will not be impacted
- Replacement delivers (like for like) functionality
- New Platform is currently scheduled for launch late August 2023 subject to successful completion of testing.



Timeline to launch

A resilient platform
for the future



Disclaimer: Go live data is subject to successful completion of UAT.

Why we are moving to a new platform



Open Data - current technology landscape

- Open Data platform built on DKAN 1.0.
- DKAN 1.0 is built on Drupal 7 CMS and integrates with API Gateways.
- The Drupal 7 CMS is reaching end of life.
DKAN 1.0 has moved into maintenance mode with no plans to move to Drupal 8 (already end-of life).
- DKAN 2.0 represents a significant rethink of the product's architecture and not in scope for Open Data.



What does the new platform enable

- Various potential solutions were evaluated.
- CKAN was chosen as it meets all our requirements and best aligns to our platform vision for the future.
- Drupal will be used for content management

1

CKAN
Open Source

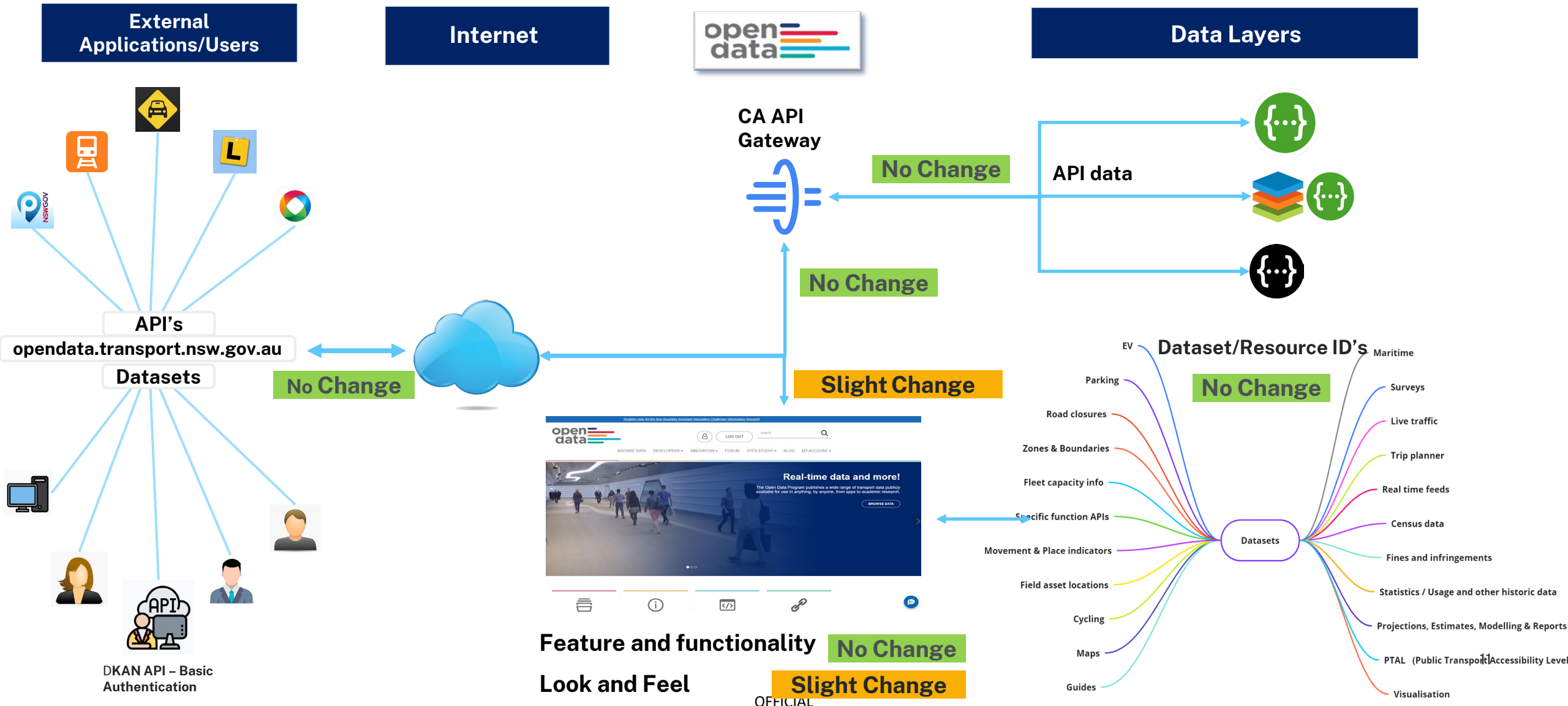
- ✓ Alignment of Technology Stack
- ✓ High Global Adoption Rate
- ✓ Production Readiness
- ✓ Documentation Quality
- ✓ Extensibility Potential
- ✓ Data Security: Encryption at Rest & Transit
- ✓ Potential Scalability
- ✓ Failover Handling

What is changing and staying the same

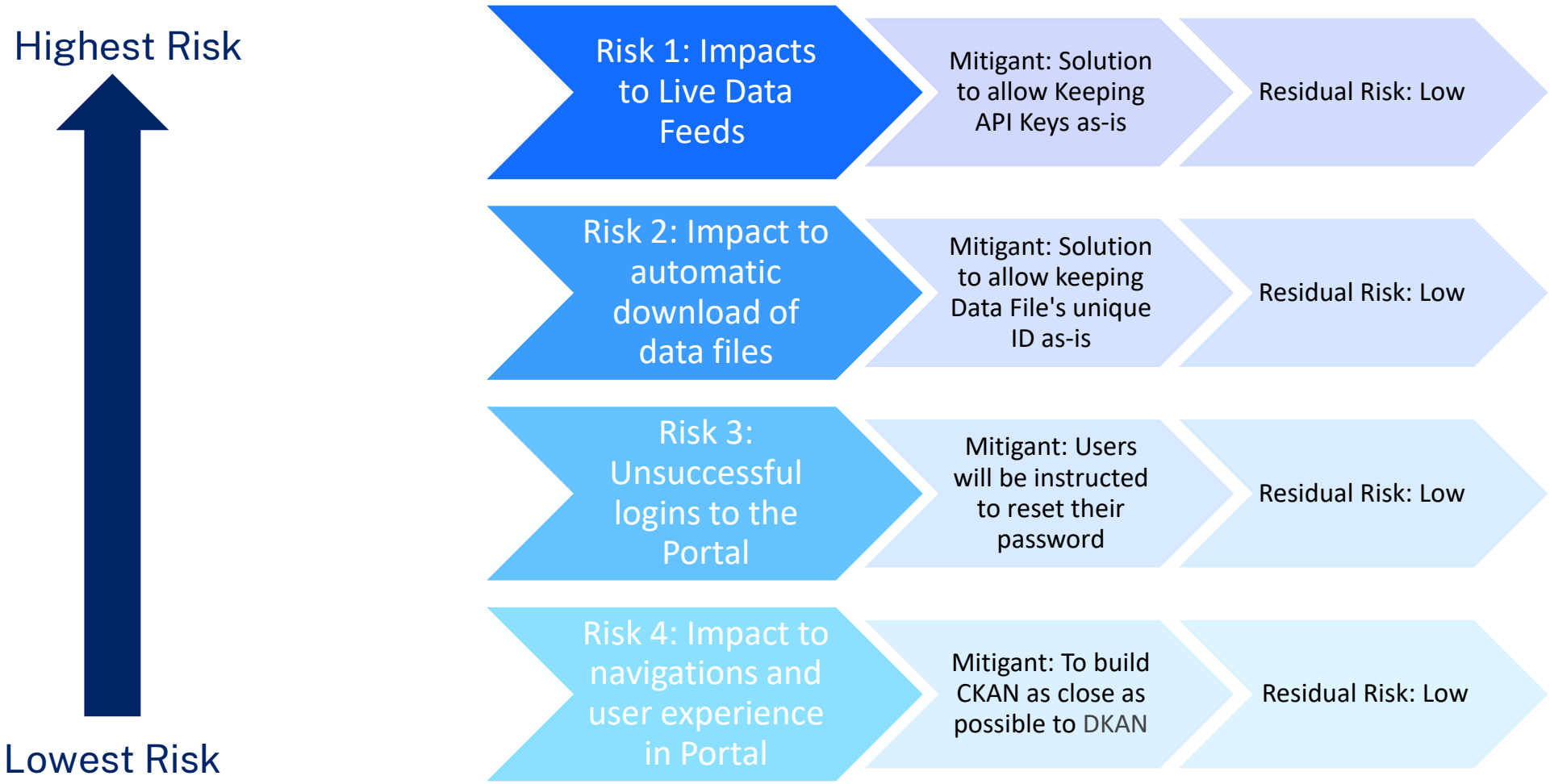
What's changing and staying the same

| Change | No Change |
|--|--|
| ✓ Look & feel: Pages, navigation, menu items | ✓ Features & functions |
| ✓ Password reset required | ✓ URL to access Open Data Hub |
| ✓ Login using your email address | ✓ API Connections to API Gateway (api.transport.nsw.gov.au) |
| ✓ API Gateway Integration from DKAN to CKAN (Back-end) | ✓ Existing API keys |
| | ✓ Dataset & Resource ID |
| | ✓ Product Integrations |

Open Data Context Diagram – Current vs New Platform



Summary of Risks and Impacts



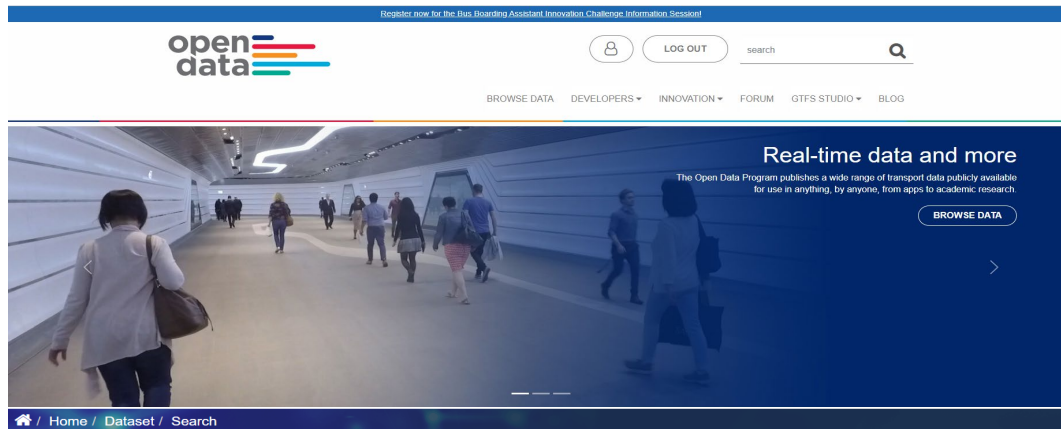
Downloading data from the new platform

- All datasets published on the current Open Data Hub will be available in the new Open Data Hub.
- There will be no changes to Dataset, Resource & DKAN API ID's (subject to UAT)
- Data can be downloaded once users have logged in with username and password (Basic Authentication)



Subtle changes to the look: Old vs New

Old Platform



Content Types

- Dataset
- Topics
- Roads (41)
- Statistical Information (33)
- Train (21)
- Bus (20)
- Boating (19)
- Cycling (16)
- City Planning (15)
- Parking (15)
- Transport Information (15)
- Trip Planning (15)
- Ferry (10)
- Public Information (10)
- Light Rail (9)
- Metro (8)
- Car (5)
- Walking (4)
- Taxi (2)

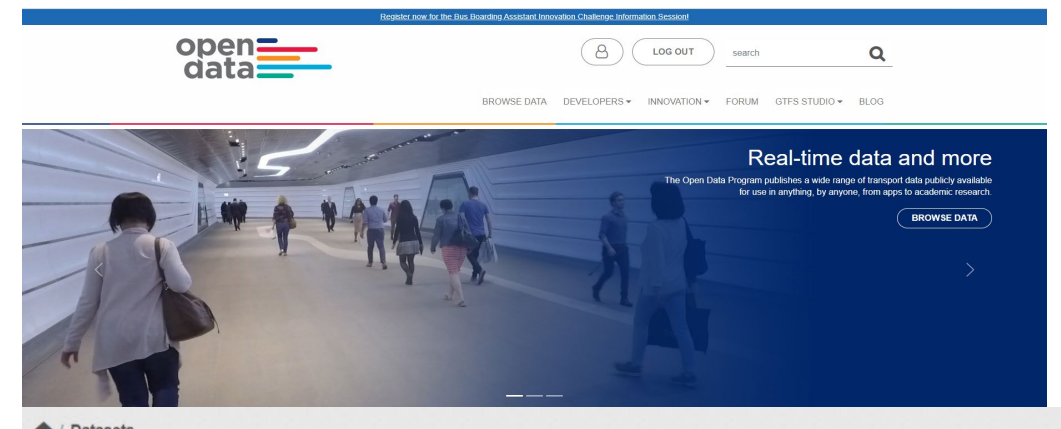
217 results

Search:

Sort by: Date changed | Order: Descending | [APPLY](#) | [RESET](#)

- Opal Trips - Bus**
Bus
This dataset contains Official Bus Utilisation figures. Opal tap-on/tap-off data (representing an individual boarding and alighting a bus) is aggregated to a total monthly figure representing the estimated number of trips. **Caution** 1...
3x [csv](#) 4x [pdf](#)
- Reference Tables for TfNSW GTFS feeds**
Trip Planning
Reference tables for TfNSW data. A complete list of agencies and how they are defined in each GTFS feed. **Using Complete GTFS + Real-Time GTFS feeds** The reference tables illustrates agencies that appear in multiple GTFS feeds. If you are using...
12x [csv](#) [xlsx](#)
- Public Transport - Timetables - For Realtime**
Trip Planning
Static timetables, stop locations, pathways for trains, and route shape information in GTFS format for

New Platform



Organizations

- t NSW-dev - 34
- Autonomous Vehicle... - 1
- BOM - 1

Groups

- Public APIs - 1

Tags

- nsw - 6
- bicycle - 5
- active transport - 4
- bike - 4
- cycle - 4
- cycling - 4
- gtfs - 4

[Add Dataset](#)

Search datasets...

36 datasets found | Order by: Relevance

- Maritime Alerts Reporting Platform API**
The Maritime Alerts Reporting Platform (MARP) API is a real-time GeoJSON feed of alerts intended for vessel operators. It includes information from both Roads and Maritime...
[openapi-json](#) [PDF](#)
- Trip Planner APIs**
Create your own personal public transport trip planner. APIs interact with the transportsw.info trip planner and provide the ability for NSW public transport trip planning...
[openapi-json](#) [PDF](#) [CSV](#)
- Public Transport - Realtime Vehicle Positions**
Current vehicle positions in GTFS-realtime format for Buses, Ferries, Light Rail, Trains, Metro and Regional Bus Services (our regional services are at times referenced as "TCB"...
[api](#)

04

What you need to do



Steps for a seamless transition

1. Store your API Keys securely
2. Reset your password
3. Update DKAN API calls

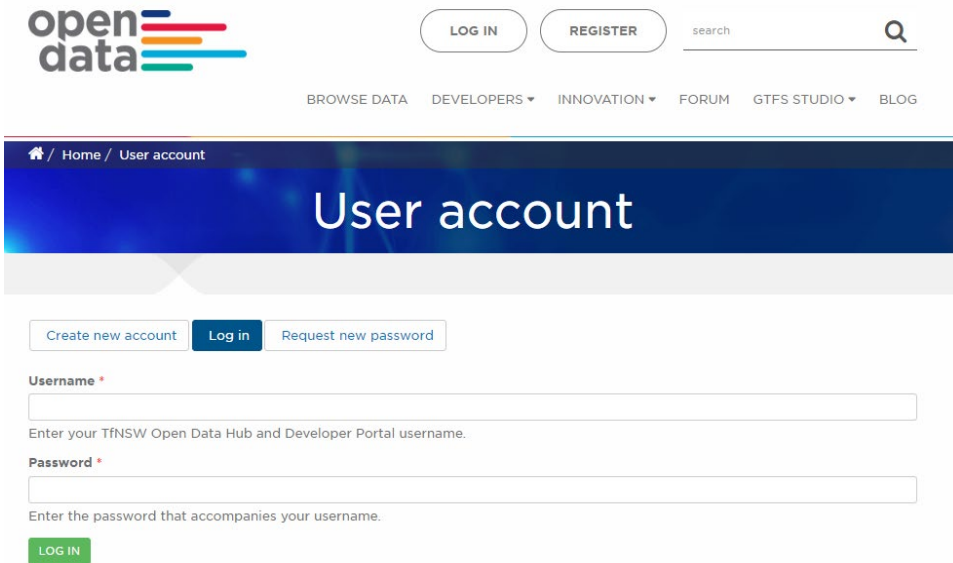
Ensure your API keys are stored securely

- An API Key is a unique identifier used to authenticate a user, or calling program to an API.
- Your existing API keys will be migrated across along with your existing permission levels, rate limits and usage quotas.
- For security reasons, you will not be able to see your API Keys on the CKAN Platform.
- We recommend you **save your API Keys in a safe place or generate a new one to access the APIs on the CKAN Platform**. If you don't you will not be able to access the Open Data APIs.



Reset your password

- On first login to the new portal you will be prompted to reset your password.
- To reset: Click 'Log in' on the top toolbar of the Open Data Hub Home Page and follow the prompts.
- Your username will be your email address.



The screenshot shows the Open Data Hub website's user account page. At the top left is the 'open data' logo. To its right are 'LOG IN' and 'REGISTER' buttons, followed by a search bar. Below these are navigation links: 'BROWSE DATA', 'DEVELOPERS', 'INNOVATION', 'FORUM', 'GTFS STUDIO', and 'BLOG'. The main heading is 'User account'. Below the heading are three buttons: 'Create new account', 'Log in', and 'Request new password'. The 'Log in' button is highlighted. Below the buttons are two input fields: 'Username' and 'Password'. The 'Username' field has a red asterisk and a placeholder text: 'Enter your TfNSW Open Data Hub and Developer Portal username.' The 'Password' field has a red asterisk and a placeholder text: 'Enter the password that accompanies your username.' At the bottom left of the form is a green 'LOG IN' button.

Image shows current log in page on DKAN. It is expected that page in CKAN will be similar.



For any issues with re-setting your password following the Open Data platform replacement, please contact opendataprogram@transport.nsw.gov.au

DKAN API

- The DKAN API allows users to programmatically call static datasets using username and password
- If you use this method, you will need to update your basic authentication after resetting your password in the new system



Location facilities

Location facilities for train stations, wharves & bus interchanges

This file is periodically updated. This file can be downloaded using the dkan API. This API uses http basic auth.

Instructions:

Base64 encode your username and password separated by a colon (: symbol). This will be your authorization key.

Insert this key in your authorization header as shown in the curl example below:

Example call:

```
curl -H "Authorization: Basic bm90bXk6cmVhbHBhc3N3b3JkOi"  
https://opendata.transport.nsw.gov.au/api/download/ca137e89-b274-428c-98...
```

EXPLORE

DOWNLOAD

05

Testing the new solution

UAT - What's happening



- User Acceptance Testing (UAT) planned to commence on 7 August
- TfNSW endorsed App Developers will be invited to participate
- Basic website functionality
- API integrations
- User feedback

Where to find more information

Information updates will be posted on the Open Data Hub at regular intervals.

Check back regularly for updates

Contact us

opendataprogram@transport.nsw.gov.au

The enquiries will be answered within 2 business days

